

Carcass + PLUS

BULL SALE

***Poland Angus Ranch
CB Farms***

***Wednesday,
March 6, 2024
Isabel, Kansas***

DVAuction
Broadcasting Real-Time Auctions

U.S. PREMIUM
BEEF



**Carcass
PLUS**
BULL SALE

Auctioneer: Andrew Sylvester, 785-456-4352

Livestock Press:

Bud Mears, *High Plains Journal*, 785-405-0376
Stephen Russell, Kansas Stockman, 785-458-2650
Guy Peverly, *The Stock Exchange*, 785-456-4390

Buyers unable to attend the sale may send their bids to the Auctioneer, owners or any member of the livestock press.

DVAuction will be broadcasting this year's sale. Go to www.dvauction.com to view the video of the bulls and register to bid.

Sale Day Phones:

Richard Poland	620-886-1720
Berry Bortz	620-546-6077
Brandon Bortz	620-546-4199
Brandon Poland	620-886-1755
Paul Smith	620-886-0399
Jeff Mafi	816-344-4266

Accommodations:

PRATT, KS:

Comfort Suites.....704 Allison Lane - 620-672-9999
Holiday Inn Express.....1903 Pauline Pl. - 620-508-6350
Best Western Plus.....112 K-61 - 620-508-6466

MEDICINE LODGE, KS:

Copa Budget Host Inn.....W. Hwy. 160 - 620-886-5673

Sale Location:

From Isabel, KS (which is 15 miles north of Medicine Lodge or 22 miles SE of Pratt), Poland Angus Ranch is located 1 mile east on Hwy 42, 3 miles south on Isabel Road, 1 mile east on Mineral Road (at Poland Angus Sign) and 1/4 mile north on Harvest Road.

Repeat Buyer and Volume Discounts:

We offer discounts for both our repeat buyers and volume buyers of bulls that sell for greater than \$3,500. If you have purchased a bull in the last three years, you will receive a 5% discount on your bull purchases for any bull selling for more than \$3,500. If you buy five or more bulls for more than \$3,500 each, you will receive a 5% discount. Buy 10 or more and take 10% off. The total discount combining the repeat and volume discounts will not exceed 10%. Additionally, there is a \$50/head discount for bulls taken home on sale day.

Breeding Guarantee:

First breeding season guarantee until August 1 of the year purchased, against death and injury on any bull selling for \$3,500 or more. In the case of an injury that prohibits the bull's use as a breeder per inspection by buyer and seller, the bull will be sold for salvage price, which the buyer will retain. The buyer will then receive credit for the bid price less the salvage price in next year's sale or exchange for a suitable replacement. All bulls are guaranteed as breeders; we stand behind all of the bulls regardless of price.

Post-Sale Care:

For those that may not have a safe place for your new purchase, we will care for your new purchases at no cost to you or 30 days. After 30 days, we will continue to care for your bull for \$5 per day.

Terms and Conditions:

We will retain 1/3 revenue sharing semen interest in all bulls selling in this year's sale. The purchaser gets full possession and 100% salvage value of the purchased bull. All purchases are to be settled sale day unless prior arrangements have been made. Cattle will sell under the suggested Terms and Conditions of the American Angus Association (http://www.angus.org/Pub/suggested_sale_terms.pdf).

Herd Health:

Proper health certificates for immediate shipment will accompany all cattle. All breeding age bulls have passed a breeding soundness evaluation and have tested PI negative.

Announcements:

Announcements made from the sale block will take precedence over printed material.

Insurance:

Livestock mortality insurance is available upon request through Farm Bureau Insurance in Medicine Lodge. Call Corona Hoch at 620-886-3316. The office personnel will help you.

Delivery:

Bulls picked up sale day will receive a \$50 discount. Free delivery; 1) all purchases within 100 miles; 2) all purchases \$3500 or more, or two or more bulls within 200 miles; 3) all bulls over \$5000 within the continental United States.

Video Auction

The bulls will not run through the ring on sale day, so come early to evaluate the bulls in the pens! See page 14 for more information.

Selling:

40 Angus Fall Yearlings
35 Angus Spring Yearlings

Schedule of Events:

March 5th:

Noon-6:30.....View Bulls

March 6th:

8 AM.....View Bulls
11:30 AM.....Complimentary Lunch
12:45 PM.....Opening Comments
1 PM.....Video Auction Begins

View the sale book, bull video, and updated bull information on our website: www.polandangus.com.

Dear Friends,

Welcome to the 2024 "Carcass Plus" Bull Sale.

Poland Angus Ranch Mission Statement: "To produce beef cattle that will have a lasting, positive effect on the beef industry". In this rapidly changing world, this is a challenge. A challenge that I believe we work to achieve with each breeding decision we make. I hope that you will be able to find the "pieces of the puzzle" that will fit into your breeding program.

As I evaluate this set of bulls, I think about a song that I sang as a child. You know the song, "Deep and Wide". There is a fountain flowing with genetics here that are "Deep and Wide". Come and see if you evaluate them as I do. You will like what you see!

I realize more each year that Solomon was correct when he said in Ecclesiastes 1:9, "What has been will be again, what has been done will be done again; there is nothing new under the sun."

Yes, we have had it again this past year, too hot, tooooooo cold; too dry, too wet; etc. Nothing new under the sun.

Thank you God for providing for us through another year!

EXCITING NEWS!! Anita and I are Great Grandparents! A new chapter in our lives was started with the birth of Kyler Daub in November. EXCITING!!! He makes Brandon and Jan Grandparents! That is a little weird sounding.

Last March, Anita and I were included in the 2022 Class of Master Farmers and Master Farm Homemakers. Thank you for that recognition! We had a wonderful time at the two meetings we have attended, visiting with old friends and making new friends. We are not alone in this group as Berry and Carla Bortz were in the Class of 2008. Surround yourself with good people.

Thank you for considering the Carcass Plus Bull Sale for your beef genetic needs. I am confident that you will find the bulls in the offering that can and will propel your breeding program and business in the desired direction.

The bulls will be in their pens here on Tuesday afternoon. We will be glad to show the bulls to you at any other time at your convenience, just give us a call, so that we can be available to assist you. If you cannot be at the sale, you may leave bids with any of the livestock publication representatives or anyone on our team, or sign up to bid on DV Auction a few days prior to the sale.

See you sale day!

Sincerely,

Richard



Richard and Anita



**Brandon, Jan, Faith, Regan, Zeb and Quinn Poland
Bailea and Daniel Daub**



Paul, Heather, Corbin, Camryn and Callan Smith



Kent, Erin, Isabel and Reese Simpson

PAR Reference Sires

Registration Name	Tattoo Birth Date	Production										Maternal						Carcass						\$Values			
		CED Acc	BW Acc	WW Acc	YW Acc	RADG Acc	DMI Acc	YH Acc	SC Acc	Doc Acc	HP Acc	CEM Acc	Milk Acc	MkH Acc	MW Acc	MH Acc	SEN Acc	CW Acc	Marb Acc	RE Acc	Fat Acc	Carc Grp/Pg	Usnd Grp/Pg	\$M \$W	\$F \$G	\$B \$C	
16764044 KM Broken Bow 002	002	+10	-1.6	.61	+101	.22	.91	.2	.38	+13	.94	+13	.25	.466	.58	.4	-13	.34	.88	.72	-.026	23	925	.57	.76	+145	
	01/14/2010	.91	.97	.96	.94	.72	.72	.94	.93	.90	.80	.89	.91	1765	.82	.83		.79	.77	.73	.77	88	2419	.68	.69	+245	
19416968 Poss Rawhide	9513	+12	-.3	.84	+137	.31	.51	.3	+1.03	.32	.96	+13	.29	9	.91	.4	-32	.74	+1.02	.73	+.063	2	380	.64	.131	+200	
	02/11/2019	.87	.96	.94	.90	.72	.72	.91	.89	.83	.59	.56	.44	30	.45	.44		.55	.50	.50	.50	3	918	.83	.69	+323	
19257149 Connealy Emerald	848X	+6	+0	.62	+123	.33	+1.09	.1	.68	.27	+15.3	+10	.20		.61	.3	-12	.38	.91	+1.13	-.023		4	.74	.91	+166	
	01/06/2018	.88	.95	.94	.91	.62	.62	.92	.91	.84	.69	.80	.73		.67	.64		.60	.55	.54	.56		9	.59	.76	+289	
19653962 Rosemayne Resource 912	912	-1	+3.5	.62	+111	.26	.99	.5	.76	.18	+12.2	.5	.20		.81	.4	-22	.33	.23	.55	-.005			.47	.74	+105	
	03/02/2019	.37	.68	.61	.49	.37	.37	.50	.48	.35	.25	.30	.35		.40	.42		.45	.38	.38	.36			.45	.32	+183	
19420091 PAR Broken Bow 718	718	+7	+2.1	.67	+116	.22	+1.22	.1	.22	.20	.95	+10	.26	3	.64	.3	-17	.41	+1.02	.73	-.037		7	.72	.79	+156	
	09/19/2018	.45	.72	.67	.61	.39	.39	.67	.56	.53	.26	.37	.37	6	.48	.45		.48	.39	.40	.37		7	.64	.77	+274	



1 PAR Patriarch 412																	
Adj Yrlg Hip Ht	Birth Dt: 08/26/22		HD50K		Bull		*20741897				Tattoo: 412						
	CED	BW	WW	YW	RADG	DMI	YH	SC									
Adj Yrlg	+19	1%	-4.9	1%	+62	55%	+120	40%	+24	65%	+1.88	95%	+3	75%	+40	80%	
Scr Cir	Doc	Claw	Angle	PAP	HS	HP	CEM	Milk									
	+14	75%	+44	30%	+42	20%	+2.49	80%	+50	50%	+9.4	80%	+16	2%	+25	60%	
Adj % IMF	MW	MH	SEN	CW	Marb	RE	Fat										
	70	45%	+3	60%	-20	65%	+42	70%	+74	45%	+53	70%	+0.14	55%			
% IMF Ratio	Hoover Dam [AMF-CAF-XF]															SM	+56
	S S Niagara Z29 [AMF-CAF-XF]															SW	+75%
	Jet S S X144 [DDF]															SF	+61
Adj RE	Tehama Patriarch F028 [AMF-CAF-XF]															SE	+45%
	*18981191															SE	+79
RE Ratio	Tehama Elite Blackbird D826															SE	+70%
	Tehama Elite Blackbird Z630 [DDF]															SE	+56
	baldridge Xpand x743 [DDF]															SE	+40%
Adj	Baldridge Challenger [AMF-CAF-XF]															SB	+135
Rib Fat	Baldridge Isabel Y69 [DDF]															SC	+55%
	PAR Challenger Carla 0497															SC	+231
	*20099635															GR	+70%
Rib Fat Ratio	B3R B097 Carla U077 Z163																
	B3R Z163 Carla 4413 X266																
	BW	CE	BWR	ADJ WW	WWR	ADJ YW	YWR	Test ADG	GR								
Adj Rump Fat	55	1	84	607	108	1169	107										
	Dam's Production Record															Dam's Ultrasound Production Record	
	ACT BW	BWR	WWR	YWR	% IMF	RE	Fat	RU Fat									
Rump Fat Ratio	1-55	1-84	1-108	1-107													



2 PAR Patriarch 442																	
Adj Yrlg Hip Ht	Birth Dt: 09/02/22		HD50K		Bull		*20741898				Tattoo: 442						
	CED	BW	WW	YW	RADG	DMI	YH	SC									
Adj Yrlg Scr Cir	+9	30%	+2.3	75%	+83	10%	+153	4%	+33	10%	+2.10	95%	+7	30%	+1.11	35%	
	Doc	Claw	Angle	PAP	HS	HP	CEM	Milk									
	+25	20%	+46	35%	+35	4%	-10	25%	+36	25%	+15.3	20%	+8	55%	+30	25%	
Adj % IMF	MW	MH	SEN	CW	Marb	RE	Fat										
	100	15%	+8	15%	-38	95%	+68	15%	+41	80%	+1.04	10%	-0.11	20%			
% IMF Ratio	Hoover Dam [AMF-CAF-XF]															\$M	+73
	S S Niagara Z29 [AMF-CAF-XF]															SW	+25%
	Jet S S X144 [DDF]															\$W	+74
Adj RE	Tehama Patriarch F028 [AMF-CAF-XF]															\$F	+15%
	*18981191															\$E	+107
RE Ratio	Tehama Elite Blackbird D826															\$E	+15%
	Tehama Elite Blackbird Z630 [DDF]															\$G	+48
	Connealy Black Granite [AMF-CAF-XF]															\$G	+60%
Adj Rib Fat	PAR Granite 587 [OHF]															\$B	+155
	PAR Brill Blackcap 0769 [DDF]															\$C	+35%
Rib Fat Ratio	PAR 587 Blackcap 0670															\$C	+274
	20099625															GR	+30%
	K C F Bennett Absolute [AMF-CAF-XF]																
	Par Ab Blackbird 6970 [OHF]																
	PAR Blackbird IF 9770 [DDF]																
	BW	CE	BWR	ADJ WW	WWR	ADJ YW	YWR	Test ADG	GR								
Adj Rump Fat	62	1	93	619	111	1147	106										
	Dam's Production Record															Dam's Ultrasound Production Record	
	ACT BW	BWR	WWR	YWR	% IMF	RE	Fat	RU Fat									
Rump Fat Ratio	1-62	1-93	1-111	1-106													

3		PAR E Rawhide 522														
Adj Yrlg Hip Ht	Birth Dt:	09/10/22		HD50K		Bull		*20749872				Tattoo:		522		
	CED	BW	WW	YW	RADG	DMI	YH	SC								
	+14	4%	-4	20%	+89	3%	+143	10%	+27	40%	+1.04	45%	+2	85%	+1.50	15%
Adj Yrlg Scr Cir	Doc	Claw	Angle	PAP	HS	HP	CEM	Milk								
	+34	1%	+65	95%	+52	70%	-19	25%	+83	95%	+8.1	90%	+15	3%	+24	70%
Adj % IMF	MW	MH	SEN	CW	Marb	RE	Fat									
	75	40%	+1	75%	-21	70%	+68	15%	+53	65%	+77	35%	+0.44	90%		
% IMF Ratio	Basin Payweight 1682 [AMF-CAF-XF]														\$M	+72
	Poss Maverick [AMF-CAF-XF]														SW	+30%
	Poss Rawhide [AMF-CAF-XF]														SF	+88
Adj RE	*19416968														SE	+19%
	Poss Blueblood 6502														SE	+110
RE Ratio	Poss Blueblood 920 [CAF]														SE	+15%
	Summitcrest Complete 1P55 [AMF-CAF-XF]														\$G	+60%
Adj Rib Fat	KM Broken Bow 002 [AMF-CAF-XF]														+46	60%
	Summitcrest Princess 0P12														\$B	+156
Rib Fat Ratio	Par E Lass Bbow 9600														35%	+274
	19774244														30%	
	Par E Lass BG 6100															
	PAR E Lass GD 1700 [DDF-NHF]															
Adj Rump Fat	BW	CE	BWR	ADJ WW	WWR	ADJ YW	YWR	Test ADG	GR							
	76	1	105	680	121	1240	114									
	Dam's Production Record														Dam's Ultrasound Production Record	
Rump Fat Ratio	ACT BW	BWR	WWR	YWR	% IMF	RE	Fat	RU Fat								
	2-73	2-105	2-120	2-108												

4

PAR Rawhide 432

Adj Yrlg Hip Ht	Birth Dt: 09/02/22		HD50K		Bull		*20742853		Tattoo: 432	
	CED	BW	WW	YW	RADG	DMI	YH	SC		
Adj Yrlg Scr Cir	+13 10%	-1.6 10%	+64 50%	+114 50%	+28 35%	+1.09 50%	+2 85%	+41 80%		
	Doc	Claw	Angle	PAP	HS	HP	CEM	Milk		
	+36 1%	+69 95%	+53 75%	+112 50%	+86 95%	+12.6 50%	+16 2%	+24 70%		
Adj % IMF	MW	MH	\$EN	CW	Marb	RE	Fat			
	83 30%	+1 75%	-26 80%	+45 65%	+60 60%	+55 65%	+0.05 40%			
% IMF Ratio	Basin Payweight 1682 [AMF-CAF-XF]							\$M		
	Poss Maverick [AMF-CAF-XF]							+56		
	Poss Rawhide [AMF-CAF-XF]							75%		
Adj RE	Poss Pride 5163 [OSF]							\$W		
	Poss Easy Impact 0119							+61		
	Poss Blueblood 6502							45%		
RE Ratio	Poss Blueblood 920 [CAF]							\$E		
	B3R Tender Ten R065 [OSC-AMF-XF]							+88		
	B3R Back To Basics U077 [AMF-CAF-XF]							50%		
Adj Rib Fat	B3R S024 Elise P061 N191							\$G		
	SydGen Trust 6228 [AMF-CAF-XF]							+50		
	B3R Z163 Carla 4413 X266							55%		
Rib Fat Ratio	B3R X266 Carla T222 S229							\$B		
								+138		
								60%		
								\$C		
								+235		
								65%		
	BW	CE	BWR	ADJ WW	WWR	ADJ YW	YWR	Test ADG	GR	
Adj Rump Fat	64	1	85	493	88	1055	97			
	Dam's Production Record					Dam's Ultrasound Production Record				
	ACT BW	BWR	WWR	YWR	% IMF	RE	Fat	RU Fat		
Rump Fat Ratio	7-67	7-94	7-103	7-101	2-114	2-105	2-158	2-162		



5

PAR Z Emerald 652

Adj Yrlg Hip Ht	Birth Dt: 09/25/22		HD50K		Bull		20832446		Tattoo: 652	
	CED	BW	WW	YW	RADG	DMI	YH	SC		
Adj Yrlg Scr Cir	+7 45%	+3 30%	+79 15%	+146 10%	+31 15%	+1.69 90%	+5 55%	+1.57 15%		
	Doc	Claw	Angle	PAP	HS	HP	CEM	Milk		
	+14 75%	+41 20%	+60 95%	+92 45%	+51 50%	+10.8 70%	+2 95%	+21 85%		
Adj % IMF	MW	MH	\$EN	CW	Marb	RE	Fat			
	90 25%	+6 30%	-27 80%	+53 45%	+52 70%	+86 25%	+0.00 35%			
% IMF Ratio	Connealy Confidence 0100 [CAF-DDF-XF]							\$M		
	Connealy Confidence Plus [AMF-CAF-XF]							+50		
	Connealy Emerald [AMF-CAF-XF]							85%		
Adj RE	Elbanna of Conanga 1209							\$W		
	Connealy Armory [AMF-CAF-XF]							+68		
	Jace of Conanga 6571							25%		
RE Ratio	Jazzy of Conanga 4660 860C							\$F		
	Connealy Mentor 7374 [AMF-CAF-XF]							+92		
	Connealy Counselor [AMF-CAF-XF]							40%		
Adj Rib Fat	Jaze of Conanga 234							\$G		
	Quaker Hill Objective 3J15 [AMF-CAF-XF]							+50		
	PAR Counselor Rita 7902							55%		
Rib Fat Ratio	PAR 3J15 Rita 9302 [DDF]							\$B		
	MAF 305 of 2163 x 1i2 [AMF]							+142		
								55%		
								\$C		
								+234		
								70%		
	BW	CE	BWR	ADJ WW	WWR	ADJ YW	YWR	Test ADG	GR	
Adj Rump Fat	78	1	104	652	116	1218	112			
	Dam's Production Record				Dam's Ultrasound Production Record					
	ACT BW	BWR	WWR	YWR	% IMF	RE	Fat	RU Fat		
Rump Fat Ratio	4-72	4-100	4-101	4-106						



6

PAR B Emerald 582

Adj Yrlg Hip Ht	Birth Dt: 09/18/22		HD50K		Bull		20742751		Tattoo: 582		
	CED	BW	WW	YW	RADG		DMI	YH	SC		
Adj Yrlg Scr Cir	+10 20%	+1.3 55%	+72 25%	+133 20%	+31 15%		+1.38 70%	+7 30%	+98 45%		
	Doc	Claw	Angle	PAP	HS		HP	CEM	Milk		
	+29 10%	+58 85%	+47 45%	+1.43 60%	+46 40%		+11.9 55%	+8 55%	+16 95%		
Adj % IMF	MW	MH	\$EN		CW		Marb	RE	Fat		
% IMF Ratio	106 10%	+1.0 10%	-33 90%	+49 55%	+60 60%		+90 20%	-0.18 15%			
	Connealy Confidence 0100 [CAF-DDF-XF]										\$M
	Connealy Confidence Plus [AMF-CAF-XF]										+44
	Connealy Emerald [AMF-CAF-XF]										95%
Adj RE	Elbanna of Conanga 1209										\$W
	Connealy Armory [AMF-CAF-XF]										+53
	Jace of Conanga 6571										70%
RE Ratio	Jazzy of Conanga 4660 860C										\$E
	Connealy Consensus 7229 [AMF-CAF-XF]										+94
	Connealy Black Granite [AMF-CAF-XF]										40%
Adj Rib Fat	Eura Elga of Conanga 9109										\$G
	PAR B BG Primrose 7192										+56
	PAR B Primrose IM 1692 [DDF]										40%
Rib Fat Ratio	PAR B Primrose 6092 [DDF]										\$C
											+239
											65%
	BW	CE	BWR	ADJ WW	WWR	ADJ YW	YWR	Test ADG	GR		
Adj Rump Fat	76	1	101	548	98	1167	107				
	Dam's Production Record					Dam's Ultrasound Production Record					
	ACT BW	BWR	WWR	YWR	% IMF	RE	Fat	RU Fat			
Rump Fat Ratio	4-70	4-99	4-96	4-99							

7

RGCC Rawhide 592

Adj Yrlg Hip Ht	Birth Dt: 09/19/22		HD50K		Bull		*20743804		Tattoo: 592							
	CED		BW		WW		YW		RADG		DMI		YH		SC	
Adj Yrlg Scr Cir	+7	45%	+2.3	75%	+86	5%	+145	10%	+31	15%	+8.7	30%	+7	30%	+1.73	10%
	Doc		Claw		Angle		PAP		HS		HP		CEM		Milk	
	+31	4%	+75	95%	+56	85%	-1.07	10%	+89	95%	+9.7	80%	+12	20%	+27	45%
Adj % IMF	MW		MH		SEN		CW		Marb		RE		Fat			
	99	15%	+7	25%	-35	90%	+69	15%	+1.15	15%	+70	45%	+0.42	85%		
% IMF Ratio	Basin Payweight 1682 [AMF-CAF-XF]															\$M
	Poss Maverick [AMF-CAF-XF]															+54
	Poss Rawhide [AMF-CAF-XF]															80%
Adj RE	Poss Pride 5163 [OSF]															\$W
	Poss Easy Impact 0119															+77
	Poss Blueblood 6502															10%
RE Ratio	Poss Blueblood 920 [CAF]															\$E
	Connealy Consensus 7229 [AMF-CAF-XF]															+118
	Mill Bar Hickok 7242 [AMF-CAF-XF]															10%
Adj Rib Fat	Mill Bar Bemindful Maid 6304 [DDF]															\$G
	RHCC Zara Hickok 9578															+77
	PAR Final Product 613 [DDF]															15%
Rib Fat Ratio	RHCC 613 Zara 5978															\$B
	RHCC Zara IF 9678 [DDF]															+194
																10%
																\$C
																+306
																10%
	BW	CE	BWR	ADJ WW	WWR	ADJ YW	YWR	Test ADG				GR				
Adj Rump Fat	76	1	105	634	113	1087	100									
	Dam's Production Record							Dam's Ultrasound Production Record								
	ACT BW	BWR		WWR		YWR		% IMF		RE		Fat		RU Fat		
Rump Fat Ratio	2-69	2-99		2-100		1-100										

As of 02/02/24

8 PAR E 718 Broken Bow 722																
Adj Yrlg Hip Ht	Birth Dt: 10/01/22		HD50K		Bull		20788053		Tattoo: 722							
	CED	BW	WW	YW	RADG	DMI	YH	SC								
Adj Yrlg Scr Cir	+7	45%	+2.5	80%	+74	25%	+128	25%	+26	50%	+1.16	55%	+4	65%	+0.9	95%
	Doc	Claw	Angle	PAP	HS	HP	CEM	Milk								
	+21	40%	+4.1	20%	+4.1	20%	+64	40%	+28	15%	+7.7	95%	+9	45%	+24	70%
Adj % IMF	MW	MH	\$EN	CW	Marb	RE	Fat									
	78	35%	+4	50%	-23	70%	+45	65%	+84	35%	+45	80%	-0.26	10%		
% IMF Ratio	Summitcrest Complete 1P55 [AMF-CAF-XF]															\$M
	KM Broken Bow 002 [AMF-CAF-XF]															+59
	Summitcrest Princess 0P12															65%
Adj RE	PAR Broken Bow 718															\$W
	19420091															+65
	Par Primrose OI 6326 [DDF]															35%
	Sedgwicks Outlaw 538W [AMF-CAF-XF]															\$F
	PAR Primrose 3026															+82
	S A V Final Answer 0035 [AMF-CAF-XF]															65%
	X797 [AMF-CAF-XF]															\$G
	G A R Grid Maker 4603 [NHC-AMF]															+63
Adj Rib Fat	PAR E Butkus Lass 8915															30%
	19297177															\$B
	Mytty In Focus [AMF-CAF-XF]															+145
	PAR E Lass IF 9715 [DDF]															50%
	PAR E Lass 7105															\$C
																+247
																55%
	BW	CE	BWR	ADJ WW	WWR	ADJ YW	YWR	Test ADG	GR							
Adj Rump Fat	80	1	108	655	117	1229	113									
	Dam's Production Record										Dam's Ultrasound Production Record					
	ACT BW	BWR	WWR	YWR	% IMF	RE	Fat	RU Fat								
Rump Fat Ratio	1-80	1-108	1-117	1-113												

11		PAR B Unique 662																															
Adj Yrlg Hip Ht		Birth Dt: 09/25/22		HD50K		Bull		*20739152				Tattoo:		662																			
		CED		BW		WW		YW		RADG		DMI		YH		SC																	
		+2		85%		+2.7		80%		+71		30%		+130		25%		+29		25%		+1.54		80%		+6		40%		+1.13		35%	
Adj Yrlg Scr Cir		Doc		Claw		Angle		PAP		HS		HP		CEM		Milk																	
		+20		45%		+5.0		50%		+4.5		35%		+1.35		55%		+67		80%		+14.7		25%		+3		95%		+35		10%	
Adj % IMF		MW		MH		SEN		CW		Marb		RE		Fat																			
		70		45%		+6		30%		-25		75%		+46		60%		+1.01		20%		+79		30%		-0.32		10%					
% IMF Ratio		Sitz Upward 307R [AMF-CAF-XF]															\$M																
		Plattemere Weigh Up K360 [AMF-CAF-XF]															+67																
		Barbara of Plattemere 337 [DDF]															45%																
Adj RE		Deer Valley Unique 5635 [AMF-CAF-XF]															\$W																
		**18429666															+69																
		Connealy Onward [AMF-CAF-XF]															25%																
		Sitz Henrietta Pride 643T															\$F																
		Sitz Henrietta Pride 81M															+84																
RE Ratio		V A R Discovery 2240 [AMF-CAF-XF]															60%																
		EZAR Gold Rush 6001 [AMF-CAF-XF]															\$G																
		V A R Blackcap 1059 [DDF]															+77																
Adj Rib Fat		PAR B Primrose Gold 9511															15%																
		19772964															\$B																
		Gardens Ten X P258															+161																
		PAR B GTX Primrose 5311 [DDF-OHF]															30%																
		PAR B Lass 3J15 3011															\$C																
																	+276																
																	30%																
Adj Rump Fat		BW		CE		BWR		ADJ WW		WWR		ADJ YW		YWR		Test ADG		GR															
		76		1		105		464		83		1200		110																			
		Dam's Production Record																															
		Dam's Ultrasound Production Record																															
Rump Fat Ratio		ACT BW		BWR		WWR		YWR		% IMF		RE		Fat		RU Fat																	
		2-70		2-103		2-88		1-110																									


9	PAR 912 Resource 822 [OHP]															
Adj Yrlg Hip Ht	Birth Dt:	10/14/22	HD50K	Bull	*20739163				Tattoo:	822						
	CED	BW	WW	YW	RADG	DMI	YH	SC								
Adj Yrlg Scr Cir	+3	75%	+7	40%	+62	55%	+115	45%	+27	40%	+1.02	40%	+2	85%	+34	85%
	Doc	Claw	Angle	PAP	HS	HP	CEM	Milk								
	+16	65%	+6.5	95%	+56	85%	-2.47	2%	+96	95%	+9.9	80%	+2	95%	+31	20%
Adj % IMF	MW	MH	\$EN	CW	Marb	RE	Fat									
	82	30%	+4	50%	-29	85%	+47	60%	+3.7	85%	+61	55%	+0.35	80%		
% IMF Ratio	Rito 707 of Ideal 3407 7075 [AMF-CAF-XF] \$M															
	S A V Resource 1441 [AMF-CAF-XF] +34															
	S A V Blackcap May 4136 [CAF] 95%															
Adj RE	Rosemayne Resource 912 [DDF] \$W															
	19653962 +61															
	RM Madden 004 908 45%															
	Rosemayne Prim Mad 223 \$F															
	Rosemayne Primrose 0542 +94															
RE Ratio	baldridge Xpand x743 [DDF] 40%															
	Baldridge Challenger [AMF-CAF-XF] \$G															
Adj Rib Fat	Baldridge Isabel Y69 [DDF] +36															
	Par Primrose Challenger 9378 80%															
	19770219 \$B															
	Connealy Final Product [AMF-CAF-XF] +130															
	PAR Primrose FP 378 70%															
Rib Fat Ratio	PAR Primrose IF 978 [DDF] \$C															
	+203															
	90%															
	BW	CE	BWR	ADJ WW	WWR	ADJ YW	YWR	Test ADG	GR							
Adj Rump Fat	82	1	113	607	108	1161	107									
	Dam's Production Record															
	Dam's Ultrasound Production Record															
Rump Fat Ratio	ACT BW	BWR	WWR	YWR	% IMF	RE	Fat	RU Fat								
	2-79	2-113	2-104	2-107												

13		RHCC Broken Bow 452																	
Adj Yrlg Hip Ht		Birth Dt: 09/05/22		HD50K		Bull		*20743734				Tattoo: 452							
		CED		BW		WW		YW		RADG		DMI		YH		SC			
Adj Yrlg Scr Cir		+10 20%		-.5 20%		+72 25%		+119 40%		+21 85%		+1.32 65%		+4 65%		+21 90%			
		Doc		Claw		Angle		PAP		HS		HP		CEM		Milk			
Adj % IMF		+14 75%		+.50 50%		+.54 80%		-.80 15%		+.41 35%		+15.5 20%		+11 25%		+22 80%			
		MW		MH		\$EN		CW		Marb		RE		Fat					
		61		60% +3		60%		-13 45%		+47 60%		+.74 45%		+.78 30%		+.017 55%			
% IMF Ratio		C F Right Design 1802 [DDC-AMF-XF]														\$M			
		Summitcrest Complete 1P55 [AMF-CAF-XF]														+.74			
		Summitcrest Elba 1M17 [OHF]														25%			
Adj RE		KM Broken Bow 002 [AMF-CAF-XF]														\$W			
		#+*16764044														+.71			
		Basin Ambush 8161 [AMF-CAF-XF]														20%			
		Summitcrest Princess 0P12														\$F			
		Summitcrest Princess 2J10														+.83			
RE Ratio		Basin Payweight 1682 [AMF-CAF-XF]														60%			
		Molitor Payweight 572-277														\$G			
		Molitor0018 Barbella3027-572														+.59			
Adj Rib Fat		RHCC 277 Primrose 0328														35%			
		20099590														\$B			
		RHCC Primrose Bls 3428 [DDF]														+.42			
Rib Fat Ratio		RHCC Primrose Image 5142														55%			
																\$C			
																+.258 45%			
		BW		CE		BWR		ADJ WW		WWR		ADJ YW		YWR		Test ADG		GR	
Adj Rump Fat		62		1		93		616		110		1218		112					
		Dam's Production Record														Dam's Ultrasound Production Record			
Rump Fat Ratio		ACT BW		BWR		WWR		YWR		% IMF		RE		Fat		RU Fat			
		1-62		1-93		1-110		1-112											



14		PAR E Broken Bow 502																	
Adj Yrlg Hip Ht		Birth Dt: 09/10/22		HD50K		Bull		*20749870				Tattoo: 502							
		CED		BW		WW		YW		RADG		DMI		YH		SC			
Adj Yrlg Scr Cir		+7 45%		-7 15%		+65 45%		+110 55%		+.22 80%		+1.10 50%		+7 30%		+.57 70%			
		Doc		Claw		Angle		PAP		HS		HP		CEM		Milk			
		+15 70%		+.58 85%		+.49 55%		+.88 45%		+.54 55%		+9.5 80%		+11 25%		+.33 15%			
Adj % IMF		MW		MH		\$EN		CW		Marb		RE				Fat			
		58 60%		+.5		40%		-18 60%		+.49 55%		+.67 50%		+.74 40%		+.017 55%			
% IMF Ratio		C F Right Design 1802 [DDC-AMF-XF]														\$M			
		Summitcrest Complete 1P55 [AMF-CAF-XF]														+.57			
		Summitcrest Elba 1M17 [OHF]														70%			
Adj RE		KM Broken Bow 002 [AMF-CAF-XF]														\$W			
		#+*16764044														+.73			
		Basin Ambush 8161 [AMF-CAF-XF]														15%			
RE Ratio		Summitcrest Princess 0P12														\$F			
		Summitcrest Princess 2J10														+.91			
		Basin Payweight 1682 [AMF-CAF-XF]														45%			
Adj Rib Fat		Molitor Payweight 572-277														\$G			
		Molitor0018 Barbella3027-572														+.55			
		PAR E 277 Lass 0815														45%			
Rib Fat Ratio		19794208														\$B			
		PAR E Butkus Lass 8915														+.145			
		SandPoint Butkus X797 [AMF-CAF-XF]														50%			
		PAR E Lass IF 9715 [DDF]														\$C			
																+.245			
																55%			
		BW		CE		BWR		ADJ WW		WWR		ADJ YW		YWR		Test ADG		GR	
Adj Rump Fat		45		1		71		523		93		1061		97					
Rump Fat Ratio																			


16		PAR 912 Resource 842 [OHP]													
Adj Yrlg Hip Ht	Birth Dt:	10/17/22		HD50K		Bull		*20739162				Tattoo:		842	
	CED	BW		WW		YW		RADG		DMI		YH		SC	
Adj Yrlg Scr Cir	+5	60%		+2.0		70%		+68		40%		+110		55%	
	Doc	Claw		Angle		PAP		HS		HP		CEM		Milk	
	+18	55%		+.51		55%		+.60		95%		-.38		20%	
Adj % IMF	MW	MH		\$EN		CW		Marb		RE		Fat			
	65	55%		+.2		70%		-8		35%		+.34		85%	
% IMF Ratio		Rito 707 of Ideal 3407 7075 [AMF-CAF-XF] \$M													
		S A V Resource 1441 [AMF-CAF-XF] +.42													
		S A V Blackcap May 4136 [CAF] 95%													
Adj RE		Rosemayne Resource 912 [DDF] \$W													
	19653962	RM Madden 004 908 +.49													
		Rosemayne Prim Mad 223 80%													
RE Ratio		Rosemayne Primrose 0542 \$F													
		K C F Bennett Absolute [AMF-CAF-XF] +.71													
		PAR Absolute 617 85%													
Adj Rib Fat		B3R B097 Carla U077 Z163 \$G													
	Par 617 Blackcap 9069 [OHF]	S A V Brilliance 8077 [AMF-CAF-XF] +.41													
	19770216	PAR Brill Blackcap 0769 [DDF] 70%													
Rib Fat Ratio		PAR Blackcap 7369 [AMF] \$B													
		+187 95%													
	BW	CE	BWR	ADJ WW	WWR	ADJ YW	YWR	Test ADG	GR						
Adj Rump Fat	76	1	105	561	100	1099	101								
	Dam's Production Record							Dam's Ultrasound Production Record							
Rump Fat Ratio	ACT BW	BWR	WWR	YWR	% IMF	RE	Fat	RU Fat							
	2-78	2-103	2-100	1-101											


15		PAR E Broken Bow 512																
Adj Yrlg Hip Ht		Birth Dt: 09/10/22		HD50K		Bull		*20749871				Tattoo: 512						
		CED	BW	WW	YW	RADG	DMI	YH	SC									
Adj Yrlg Scr Cir		-2	95%	+3.4	90%	+65	45%	+109	60%	+.23	75%	+.82	30%	+7	30%	-.50	95%	
		Doc	Claw	Angle	PAP	HS	HP	CEM	Milk									
Adj		+19	50%	+.56	75%	+.49	55%	+.76	40%	+.60	65%	+.74	95%	+7	65%	+.23	75%	
% IMF		MW	MH	\$EN	CW	Marb	RE	Fat										
		77	40%	+.5	40%	-22	70%	+.45	65%	+.95	25%	+.51	70%	-.004	30%			
% IMF Ratio		C F Right Design 1802 [DDC-AMF-XF] Summitcrest Complete 1P55 [AMF-CAF-XF] Summitcrest Elba 1M17 [OHF]										\$M +40 95%						
Adj RE		#+*16764044 Summitcrest Princess 0P12 Summitcrest Princess 2J10										\$W +53 70%						
RE Ratio		 Molitor Payweight 572-277 Molitor0018 Barbella3027-572										\$F +RR 50%						
Adj Rib Fat		PAR E 277 Lass 0815 19794208 PAR E Butkus Lass 8915 PAR E Lass IF 9715 [DDF]										\$G +68 35%						
Rib Fat Ratio												\$G +242 60%						
		BW	CE	BWR	ADJ WW	WWR	ADJ YW	YWR	Test ADG	GR								
Adj Rump Fat		56	1	85	547	98	1016	94										
Rump Fat Ratio																		


17		RHCC Emerald 702																
Adj Yrlg Hip Ht	Birth Dt:	09/24/22		HD50K		Bull		20743634				Tattoo:		702				
	CED	BW		WW		YW		RADG		DMI		YH		SC				
Adj Yrlg Scr Cir	+8	35%	+6	35%	+68	40%	+121	35%	+28	35%	+1.00	40%	+5	55%	+83	55%		
	Doc	Claw		Angle		PAP		HS		HP		CEM		Milk				
	+16	65%	+59	85%	+57	90%	+247	80%	+63	70%	+12.1	55%	+10	35%	+28	40%		
Adj % IMF	MW	MH		SEN		CW		Marb		RE		Fat						
	58	60%	+5	40%	-15	50%	+41	75%	+62	55%	+61	55%	-0.14	20%				
% IMF Ratio	Connealy Confidence 0100 [CAF-DDF-XF]														\$M	+62		
	Connealy Confidence Plus [AMF-CAF-XF]														\$W	55%		
Adj RE	Connealy Emerald [AMF-CAF-XF]														\$W	+69		
	*19257149														\$F	25%		
RE Ratio	Jace of Conanga 6571														\$F	+79		
	Jazzy of Conanga 4660 860C														\$G	70%		
Adj Rib Fat	S A V Final Answer 0035 [AMF-CAF-XF]														\$G	+53		
	X797 [AMF-CAF-XF]														\$B	45%		
Rib Fat Ratio	G A R Grid Maker 4603 [NHC-AMF]														\$B	+132		
	D C C Rito Prime 115 [AMF-CAF-XF]														\$C	65%		
	RHCC Zara RP 0488 [DDF]														\$C	+233		
	R H C C Zara 4788 [DDF]														\$C	70%		
Adj Rump Fat	BW	CE	BWR	ADJ WW	WWR	ADJ YW	YWR	Test ADG	GR									
	68	1	91	546	98	1088	100											
	Dam's Production Record														Dam's Ultrasound Production Record			
Rump Fat Ratio	ACT BW	BWR		WWR		YWR		% IMF		RE		Fat		RU Fat				
	4-68	4-97		4-93		2-97												

18		PAR Emerald 542														
Adj Yrlg Hip Ht	Birth Dt:	09/14/22	HD50K	Bull	20742761	Tattoo:	542									
	CED	BW	WW	YW	RADG	DMI	YH	SC								
Adj Yrlg Scr Cir	+8	35%	+9	45%	+61	60%	+120	40%	+31	15%	+1.30	65%	+0	95%	+14	90%
	Doc	Claw	Angle	PAP	HS	HP	CEM	Milk								
	+14	75%	+47	40%	+47	45%	+3.35	90%	+66	75%	+14.9	25%	+15	3%	+24	70%
Adj % IMF	MW	MH	SEN	CW	Marb	RE	Fat									
	60	60%	+2	70%	-14	50%	+42	70%	+93	25%	+1.14	3%	+0.03	40%		
% IMF Ratio	Connealy Confidence 0100 [CAF-DDF-XF]														\$M	+68
	Connealy Confidence Plus [AMF-CAF-XF]														\$W	40%
Adj RE	Connealy Emerald [AMF-CAF-XF]														\$W	+56
	*19257149														\$F	60%
RE Ratio	Jace of Conanga 6571														\$F	+92
	Jazzy of Conanga 4660 860C														\$G	40%
Adj Rib Fat	S A V Resource 1441 [AMF-CAF-XF]														\$G	+75
	Rosemayne Resource 509														\$B	15%
Rib Fat Ratio	RM Blackcap NW 902														\$B	+167
	Connealy Final Product [AMF-CAF-XF]														\$C	25%
	PAR Primrose RP 9426 [DDF]														\$C	+285
															\$C	20%
Adj Rump Fat	BW	CE	BWR	ADJ WW	WWR	ADJ YW	YWR	Test ADG	GR							
	76	1	101	496	89	1053	97									
	Dam's Production Record							Dam's Ultrasound Production Record								
Rump Fat Ratio	ACT BW	BWR	WWR	YWR	% IMF	RE	Fat	RU Fat								
	4-73	4-106	4-100	3-99												

As of 02/02/24

19		PAR True North 672														
Adj Yrlg Hip Ht	Birth Dt:		09/15/22		HD50K		Bull		20741944				Tattoo:		672	
	CED	BW	WW	YW	RADG	DMI	YH	SC								
	+13	10%	+9	45%	+67	40%	+115	45%	+26	50%	+74	25%	+5	55%	+1.25	30%
Adj Yrlg Scr Cir	Doc	Claw	Angle	PAP	HS	HP	CEM	Milk								
	+31	4%	+34	5%	+33	2%	+1.33	55%	+0.1	1%	+8.8	85%	+12	20%	+33	15%
Adj % IMF	MW	MH	SEN	CW	Marb	RE	Fat									
	43	80%	+4	50%	-10	40%	+30	90%	+41	80%	+82	25%	+0.22	65%		
% IMF Ratio	Coleman Charlo 0256 [AMF-CAF-XF]															\$M
	S A V Rainfall 6846 [AMF-CAF-XF]															+83
	S A V Blackcap May 4136 [CAF]															10%
Adj RE	Square B True North 8052 [AMF-CAF-XF]															\$W
	*19405246															+74
	Elbanna of Conanga 1209															15%
RE Ratio	Elbasta of Conanga 9703															\$F
																+67
	Connealy Consensus 7229 [AMF-CAF-XF]															90%
Adj Rib Fat	Connealy Black Granite [AMF-CAF-XF]															\$G
	Eura Elga of Conanga 9109															+47
Rib Fat Ratio	Par Rita BG 6902															70%
	18826922															\$B
	Quaker Hill Objective 3J15 [AMF-CAF-XF]															+109
	PAR 3J15 Rita 9302 [DDF]															90%
	MAF 305 of 2163 x 112 [AMF]															\$C
																+274
																75%
Adj Rump Fat	BW	CE	BWR	ADJ WW	WWR	ADJ YW	YWR	Test ADG	GR							
	66	1	88	572	102	1150	106									
	Dam's Production Record										Dam's Ultrasound Production Record					
Rump Fat Ratio	ACT BW	BWR	WWR	YWR	% IMF	RE	Fat	RU Fat								
	5-63	5-90	5-97	5-98												

20		PAR 718 Broken Bow 872															
Adj Yrlg Hip Ht		Birth Dt: 10/18/22		HD50K		Bull		*20739164				Tattoo:		872			
		CED	BW	WW	YW	RADG	DMI	YH	SC								
Adj Yrlg Scr Cir		+11	15%	+2	30%	+61	60%	+107	50%	+22	80%	+1.07	45%	+2	85%	+70	65%
		Doc	Claw	Angle	PAP	HS	HP	CEM	Milk								
		+8	90%	+30	2%	+39	10%	-.05	25%	+62	70%	+8.8	85%	+11	25%	+22	80%
Adj % IMF		MW	MH	SEN	CW	Marb	RE	Fat									
		68	50%	+3	60%	-17	55%	+39	75%	+69	50%	+81	30%	-.018	15%		
% IMF Ratio		Summitcrest Complete 1P55 [AMF-CAF-X]															\$M
		KM Broken Bow 002 [AMF-CAF-XF]															+54
		Summitcrest Princess 0P12															80%
Adj RE		PAR Broken Bow 718		Sedgwicks Outlaw 538W [AMF-CAF-XF]													\$W
		19420091		Par Primrose Ol 6326 [DDF]													+56
				PAR Primrose 3026													60%
RE Ratio				Summitcrest Complete 1P55 [AMF-CAF-X]													\$F
				KM Broken Bow 002 [AMF-CAF-XF]													+81
				Summitcrest Princess 0P12													65%
Adj Rib Fat		Par Blackcap Bbow 9813 [DDF-OHF]		RAB-EGL Blue Moon 4407M [DDC-AMF-X]													\$G
		19772290		PAR Blackcap BM 8113 [DDC]													+60
				PAR 3 Blackcap Plus 1913													35%
Rib Fat Ratio																	\$B
																	+141
																	55%
																	\$C
																	+237
																	65%
		BW	CE	BWR	ADJ WW	WWR	ADJ YW	YWR	Test ADG	GR							
Adj Rump Fat		74	1	103	581	104	1138	105									
		Dam's Production Record					Dam's Ultrasound Production Record										
		ACT BW	BWR	WWR	YWR	% IMF	RE	Fat	RU Fat								
Rump Fat Ratio		2-74	2-108	2-100	1-105												

23		PAR B Broken Bow 422															
Adj Yrig Hip Ht		Birth Dt: 09/01/22		HD50K		Bull		*20741901				Tattoo: 422					
		CED	BW	WW	YW	RADG	DMI	YH	SC								
		+7	45%	+6	35%	+78	15%	+127	25%	+27	40%	+1.03	45%	+7	30%	+39	80%
Adj Yrig Scr Cir		Doc	Claw	Angle	PAP	HS	HP	CEM	Milk								
		+22	35%	+40	15%	+43	25%	+1.77	65%	+0.08	2%	+11.0	65%	+12	20%	+17	95%
Adj % IMF		MW	MH	\$EN	CW	Marb	RE	Fat									
		94	20%	+7	25%	-27	80%	+42	70%	+30	90%	+45	80%	+0.11	50%		
% IMF Ratio		C F Right Design 1802 [DDC-AMF-XF]														\$M	
		Summitcrest Complete 1P55 [AMF-CAF-XF]														+59	
		Summitcrest Elba 1M17 [OHF]														65%	
Adj RE		KM Broken Bow 002 [AMF-CAF-XF]														\$W	
		#**16764044														+66	
		Summitcrest Princess 0P12														30%	
		Summitcrest Princess 2J10														\$F	
RE Ratio																+79	
		Connealy Consensus 7229 [AMF-CAF-XF]														70%	
Adj Rib Fat		Mill Bar Hickok 7242 [AMF-CAF-XF]														\$G	
		Mill Bar Bemindful Maid 6304 [DDF]														+32	
		K C F Bennett Absolute [AMF-CAF-XF]														90%	
Adj Rib Fat Ratio		PAR B Hickok Lass 0735														\$B	
		20099609														+111	
		PAR Ab Lass 7335														90%	
		PAR PP Lass 3535 [DDF]														\$C	
																+203	
																90%	
Adj Rump Fat		BW	CE	BWR	ADJ WW	WWR	ADJ YW	YWR	Test ADG	GR							
		62	1	93	599	107	1133	104									
		Dam's Production Record														Dam's Ultrasound Production Record	
Rump Fat Ratio		ACT BW	BWR	WWR	YWR	% IMF	RE	Fat	RU Fat								
		1-62	1-93	1-107	1-104												

26 PAR 759 Challenger 882																
Adj Yrig Hip Ht	Birth Dt:		10/18/22		HD50K		Bull		*20743544				Tattoo:		882	
	CED		BW		WW		YW		RADG		DMI		YH		SC	
Adj Yrig Scr Cir	+12	10%	-1.1	10%	+70	30%	+130	25%	+29	25%	+1.40	70%	+5	55%	+48	75%
	Doc		Claw		Angle		PAP		HS		HP		CEM		Milk	
	+19	50%	+44	30%	+48	50%	+2.79	85%	+33	20%	+11.5	60%	+7	65%	+25	60%
Adj % IMF	MW		MH		\$EN		CW		Marb		RE		Fat			
	79	35%	+5	40%	-24	75%	+51	50%	+65	55%	+39	85%	+0.34	80%		
% IMF Ratio	baldridge Xpand x743 [DDF]														\$M	
	Baldridge Challenger [AMF-CAF-XF]														+59	
	Baldridge Isabel Y69 [DDF]														65%	
Adj RE	Par E Challenge 759														\$W	
	19774256														+67	
	Par E 613 Lass 6011														30%	
RE Ratio	PAR Final Product 613 [DDF]														\$F	
	PAR E Brill Lass 0711 [DDF-NHF]														+97	
	Connealy Black Granite [AMF-CAF-XF]														30%	
Adj Rib Fat	PAR Granite 587 [OHF]														\$G	
	PAR Brill Blackcap 0769 [DDF]														+48	
	PAR 587 Blackcap 0369 [OHF]														\$B	
	20099614														+145	
	PAR Blackcap Pro 3069 [DDF]														50%	
Rib Fat Ratio	PAR Brill Blackcap 0769 [DDF]														\$C	
															+247	
															55%	
Adj Rump Fat	BW	CE	BWR	ADJ WW	WWR	ADJ YW	YWR	Test ADG	GR							
	72	1	107	525	94	1058	97									
	Dam's Production Record														Dam's Ultrasound Production Record	
Rump Fat Ratio	ACT BW	BWR	WWR	YWR	% IMF	RE	Fat	RU Fat								
	1-72	1-107	1-94	1-97												

24 PAR Patriarch 472																	
Adj Yrig Hip Ht	Birth Dt: 09/09/22			HD50K		Bull		*20741899			Tattoo: 472						
	CED	BW	WW	YW	RADG	DMI	YH	SC									
Adj Yrig Scr Cir	+15	3%	-1.6	10%	+61	60%	+113	50%	+25	60%	+1.55	80%	+3	75%	+1.46	20%	
	Doc	Claw	Angle	PAP	HS	HP	CEM	Milk									
	+0	95%	+42	20%	+46	40%	+1.23	55%	+52	55%	+14.9	25%	+9	45%	+32	15%	
Adj % IMF	MW	MH	\$EN		CW		Marb		RE		Fat						
50	70%	+1	75%	-13	45%	+49	55%	+87	30%	+64	55%	-0.03	30%				
% IMF Ratio	Hoover Dam [AMF-CAF-XF]															\$M	
	S S Niagara Z29 [AMF-CAF-XF]															+67	
	Jet S S X144 [DDF]															45%	
Adj RE	Tehama Patriarch F028 [AMF-CAF-XF]															\$W	
	*18981191															+68	
	Tehama Elite Blackbird D826															25%	
	Tehama Elite Blackbird Z630 [DDF]															\$F	
RE Ratio	Connealy Black Granite [AMF-CAF-XF]															+93	
	PAR Granite 587 [OHF]															40%	
Adj Rib Fat	PAR 587 Rita 0536															\$G	
	*20099617															+65	
	Sedgwicks Outlaw 538W [AMF-CAF-XF]															25%	
	PAR OL Rita 5036 [DDF]															\$B	
	PAR Rita 3J15 0301 [DDC]															+158	
Rib Fat Ratio																35%	
																\$C	
																+272	
																30%	
Adj	BW	CE	BWR	ADJ WW	WWR	ADJ YW	YWR	Test ADG	GR								
Rump Fat	62	1	93	548	98	1039	96										
	Dam's Production Record								Dam's Ultrasound Production Record								
Rump Fat Ratio	ACT BW	BWR	WWR	YWR	% IMF	RE	Fat	RU Fat									
	1-62	1-93	1-98	1-96													


28		PAR B True North 712																	
Adj Yrlg Hip Ht	Birth Dt:	09/29/22		HD50K		Bull		*20788052				Tattoo:		712					
Adj Yrlg Scr Cir	CED	BW	WW	YW	RADG	DMI	YH	SC											
	+5	60%	+2.7	80%	+70	30%	+120	40%	+24	65%	+1.07	45%	+5	55%	+1.37	20%			
	Doc	Claw	Angle	PAP	HS	HP	CEM	Milk											
Adj % IMF	+23	30%	+47	40%	+43	25%	+2.03	70%	+27	15%	+4.3	95%	+10	35%	+28	40%			
	MW	MH	SEN	CW	Marb	RE	Fat												
	83	30%	+5	40%	-28	80%	+36	85%	+94	25%	+60	60%	+0.21	65%					
% IMF Ratio															Coleman Charlo 0256 [AMF-CAF-XF]	\$M			
															S A V Rainfall 6846 [AMF-CAF-XF]	+45			
															S A V Blackcap May 4136 [CAF]	95%			
Adj RE															Square B True North 8052 [AMF-CAF-XF]	\$W			
	**19405246														Connealy Consensus [DDF]	+63			
															Elbanna of Conanga 1209	40%			
RE Ratio															Elbasta of Conanga 9703	\$F			
															Basin Payweight 1682 [AMF-CAF-XF]	+75			
															Molitor Payweight 572-277	80%			
Adj Rib Fat															Molitor0018 Barbella3027-572	\$G			
	PAR B 277 Lass 0611														+66				
	20099606														25%				
Rib Fat Ratio															Sedgwicks Outlaw 538W [AMF-CAF-XF]	\$B			
	Par B Ol Lass 6311 [DDF]														+142				
	PAR B Lass 3J15 3011														55%				
Adj Rump Fat															\$C				
															+229				
															75%				
Rump Fat Ratio	BW	CE	BWR	ADJ WW	WWR	ADJ YW	YWR	Test ADG	GR										
	78	1	115	552	99	1029	95												
	Dam's Production Record														Dam's Ultrasound Production Record				
Rump Fat Ratio	ACT BW	BWR	WWR	YWR	% IMF	RE	Fat	RU Fat											
	1-78	1-115	1-99	1-95															

31		PAR Emerald 732																
Adj Yrlg Hip Ht	Birth Dt:		10/01/22		HD50K		Bull		20742757				Tattoo:		732			
	CED	BW		WW		YW		RADG		DMI		YH		SC				
	+8	35%	-3	20%	+39	95%	+83	90%	+23	75%	+77	25%	+0	95%	+1.00	45%		
Adj Yrlg Scr Cir	Doc	Claw		Angle		PAP		HS		HP		CEM		Milk				
	+20	45%	+53	65%	+55	85%	+1.64	60%	+84	95%	+15.5	20%	+8	55%	+25	60%		
Adj	MW	MH		\$EN		CW		Marb		RE		Fat						
% IMF	13	95%	-2	95%	+9	10%	+17	95%	+63	55%	+74	40%	+0.27	70%				
% IMF															\$M			
Ratio	Connealy Confidence 0100 [CAF-DDF-XF]														+71			
	Connealy Confidence Plus [AMF-CAF-XF]														30%			
Adj RE	Connealy Emerald [AMF-CAF-XF]														\$W			
	*19257149 Connealy Armory [AMF-CAF-XF]														+41			
RE	Jace of Conanga 6571 Jazzy of Conanga 4660 860C														\$F			
Ratio	Rosemayne Resource 509 S A V Resource 1441 [AMF-CAF-XF]														+59			
	PAR 509 Emilia 725 [DDF] RM Blackcap NW 902														\$G			
Adj Rib Fat	19155054 B3R W233 Elector TendTn R310 [OSF]														+52			
	B3R B225 Emilia W233 Y060														\$B			
Rib Fat	B3R Y060 Emilia M070 W312														+111			
Ratio															90%			
															\$C			
															+215			
															85%			
Adj	BW	CE	BWR	ADJ WW	WWR	ADJ YW	YWR	Test ADG		GR								
Rump Fat	80	1	107	542	97	1043	96											
	Dam's Production Record														Dam's Ultrasound Production Record			
Rump	ACT BW	BWR	WWR	YWR	% IMF	RE	Fat	RU Fat										
Fat Ratio	3-75	3-107	3-96	1-96														


29		PAR E 759 Challenger 782														
Adj Yrlg Hip Ht	Birth Dt:		10/03/22		HD50K		Bull		*20749869				Tattoo:		782	
	CED		BW		WW		YW		RADG		DMI		YH		SC	
Adj Yrlg Scr Cir	+11		15%		-1.0		10%		+52		85%		+98		75%	
	Doc		Claw		Angle		PAP		HS		HP		CEM		Milk	
	+15		70%		+51		55%		+42		20%		+4.48		95%	
Adj % IMF	MW		MH		\$EN		CW		Marb		RE		Fat			
	27		90%		+0		85%		-6		30%		+41		75%	
% IMF Ratio																
Adj RE	19774256		Par E 613 Lass 6011													
RE Ratio																
Adj Rib Fat	20099639		Par E Lass BG 6100													
Rib Fat Ratio																

32 PAR Challenger 492	
-----------------------	--

34 PAR 912 Resource 832 [OHP]																	
Adj Yrlg Hip Ht	Birth Dt: 10/17/22		HD50K		Bull		20739161			Tattoo: 832							
	CED	BW	WW	YW	RADG	DMI	YH	SC									
Adj Yrlg Scr Cir	+3	75%	+1.8	65%	+48	90%	+95	80%	+28	35%	+31	10%	+2	85%	+65	65%	
	Doc	Claw	Angle	PAP	HS	HP	CEM	Milk									
	+18	55%	+41	20%	+56	85%	+91	45%	+62	70%	+46	95%	+8	55%	+30	25%	
Adj % IMF	MW	MH	\$EN	CW	Marb	RE	Fat										
	45	75%	+3	60%	-10	40%	+36	85%	+47	75%	+54	70%	-0.02	30%			
% IMF Ratio	S A V Resource 1441 [AMF-CAF-XF]														SM		
	Rosemayne Resource 912 [DDF]														SW		
Adj RE	19653962	RM Madden 004 908													+48		
	Rosemayne Prim Mad 223														SE		
RE Ratio	Rosemayne Primrose 0542														+91		
	Basin Franchise P142 [NHC-AMF-XF]														SG		
Adj Rib Fat	EF Complement 8088 [AMF-CAF-XF]														+43		
	EF Everelda Entense 6117														SB		
Rib Fat Ratio	Sedgwicks Outlaw 538W [AMF-CAF-XF]														+134		
	PAR OL Rita 5033 [DDC]														SC		
	PAR Rita 3J15 0301 [DDC]														+215		
															85%		
Adj Rump Fat	BW	CE	BWR	ADJ WW	WWR	ADJ YW	YWR	Test ADG	GR								
	80	1	107	580	104	1036	95										
	Dam's Production Record														Dam's Ultrasound Production Record		
Rump Fat Ratio	ACT BW	BWR	WWR	YWR	% IMF	RE	Fat	RU Fat									
	4-71	4-101	4-99	3-98													

35 PAR B 718 Bow 892																
Adj Yrlg Hip Ht	Birth Dt:		10/23/22		HD50K		Bull		20739151				Tattoo:		892	
	CED	BW	WW	YW	RADG	DMI	YH	SC								
Adj Yrlg Scr Cir	+8	35%	+1.7	65%	+57	70%	+97	80%	+21	85%	+33	10%	-1	95%	+68	65%
	Doc	Claw	Angle	PAP	HS	HP	CEM	Milk								
	+7	95%	+40	15%	+42	20%	+94	45%	+59	65%	+6.8	95%	+12	20%	+26	55%
Adj % IMF	MW	MH	\$EN		CW	Marb	RE	Fat								
	24	95%	-1	90%	+3	15%	+28	95%	+98	25%	+69	45%	-0.026	10%		
% IMF Ratio	Summitcrest Complete 1P55 [AMF-CAF-XF]															\$M
	KM Broken Bow 002 [AMF-CAF-XF]															+66
	Summitcrest Princess 0P12															45%
Adj RE	PAR Broken Bow 718															\$W
	19420091															+60
	Sedgwicks Outlaw 538W [AMF-CAF-XF]															50%
	Par Primrose OI 6326 [DDF]															\$F
	PAR Primrose 3026															+68
RE Ratio																90%
	A A R Ten X 7008 S A [AMF-CAF-XF]															\$e
Adj Rib Fat	Gardens Ten X P258															+74
	Green Garden Ella A258 S1															+138
	PAR B GTX Primrose 5391 [OHF]															\$B
	#18536195															+142
	Sitz Dash 10277 [AMF-CAF-XF]															55%
	PAR B Primrose Dash 3091A															\$C
	PAR B Primrose GD 0691 [DDF]															+250
																50%
Adj Rump Fat	BW	CE	BWR	ADJ WW	WWR	ADJ YW	YWR	Test ADG	GR							
	84	1	112	581	104	1040	96									
	Dam's Production Record										Dam's Ultrasound Production Record					
Rump Fat Ratio	ACT BW	BWR	WWR	YWR	% IMF	RE	Fat	RU Fat								
	6-76	6-108	6-117	6-107												

36	RHCC Broken Bow 642															
Adj Yrlg Hip Ht	Birth Dt:	09/06/22	HD50K	Bull	*20743732					Tattoo:	642					
	CED	BW	WW	YW	RADG	DMI	YH	SC								
Adj Yrlg Scr Cir	+11	15%	-1.1	10%	+65	45%	+111	55%	+23	75%	+94	35%	+0	95%	+1.11	35%
	Doc	Claw	Angle	PAP	HS	HP	CEM	Milk								
	+18	55%	+52	60%	+58	95%	+66	40%	+27	15%	+7.8	95%	+13	10%	+27	45%
Adj % IMF	MW	MH	SEN	CW	Marb	RE	Fat									
	40	80%	-3	95%	-5	25%	+35	85%	+80	35%	+82	25%	+0.22	65%		
% IMF Ratio	C F Right Design 1802 [DDC-AMF-XF]															
	Summitcrest Complete 1P55 [AMF-CAF-XF]															
	Summitcrest Elba 1M17 [OHF]															
Adj RE	#**16764044															
	Basin Ambush 8161 [AMF-CAF-XF]															
	Summitcrest Princess 0P12															
	Summitcrest Princess 2J10															
RE Ratio	Connealy Consensus 7229 [AMF-CAF-XF]															
	Mill Bar Hickok 7242 [AMF-CAF-XF]															
	Mill Bar Bemindful Maid 6304 [DDF]															
Adj Rib Fat	RHCC Hickok Zara 0578															
	20099593															
	RHCC 613 Zara 5978															
	RHCC Zara IF 9678 [DDF]															
Rib Fat Ratio																
	BW	CE	BWR	ADJ WW	WWR	ADJ YW	YWR	Test ADG	GR							
Adj Rump Fat	62	1	93	546	98	1002	92									
	Dam's Production Record															
	Dam's Ultrasound Production Record															
	ACT BW	BWR	WWR	YWR	% IMF	RE	Fat	RU Fat								
Rump Fat Ratio	1-62	1-93	1-98	1-92												

37 PAR Growth Fund 572 [OHF]																	
Adj Yrlg Hip Ht	Birth Dt: 09/16/22		HD50K		Bull		20741421			Tattoo: 572							
	CED	BW	WW	YW	RADG	DMI	YH	SC									
Adj Yrlg Scr Cir	+12	10%	-1.1	10%	+66	45%	+122	35%	+28	35%	+89	35%	+0	95%	+99	45%	
	Doc	Claw	Angle	PAP	HS	HP	CEM	Milk									
	+12	80%	+55	75%	+47	45%	+158	60%	+1.07	95%	+10.3	75%	+11	25%	+26	55%	
Adj % IMF	MW	MH	\$EN	CW	Marb	RE	Fat										
	61	60%	-3	95%	-16	55%	+46	60%	+71	45%	+55	65%	+0.56	95%			
% IMF Ratio	Basin Payweight 1682 [AMF-CAF-XF]															\$M	
	Basin Payweight 1682 [AMF-CAF-XF]															+58	
	21AR O Lass 7017															70%	
Deer Valley Growth Fund [AMF-CAF-XF]																\$W	
Adj RE	++18827828															+67	
	Deer Valley Rita 36113 [DDF]															30%	
	Deer Valley Rita 9457 [DDC-AMF-NHF]															\$F	
RE Ratio																+94	
	S A V 8180 Traveler 004 [AMF-CAF-XF]															40%	
	RM Madden 004 908															\$G	
Adj Rib Fat	PAR Blackcap 4813 [DDF]															+51	
	18116898															50%	
	RAB-EGL Blue Moon 4407M [DDC-AMF-X]															\$B	
	PAR Blackcap BM 8113 [DDC]															+145	
Rib Fat Ratio	P A R 3 Blackcap Plus 1913															50%	
																\$C	
																+246	
																55%	
Adj Rump Fat	BW	CE	BWR	ADJ WW	WWR	ADJ YW	YWR	Test ADG	GR								
	72	1	96	509	91	978	90										
	Dam's Production Record										Dam's Ultrasound Production Record						
Rump Fat Ratio	ACT BW	BWR	WWR	YWWR	% IMF	RE	Fat	RU Fat									
	6-73	6-102	6-95	6-99	2-95	2-101	2-77	2-104									



40	RHCC True North 562															
Adj YrG Hip Ht	Birth Dt:	09/15/22		HD50K		Bull		20743843		Tattoo: 562						
Adj YrG Scr Cir	CED	BW	WW	YW	RADG	DMI	YH	SC								
	+11	15%	-3	20%	+52	85%	+97	80%	+25	60%	+0	95%	+86	55%		
	Doc	Claw	Angle	PAP	HS	HP	CEM	Milk								
Adj % IMF	+17	60%	+62	95%	+58	95%	+1.21	55%	+36	25%	+8.1	90%	+17	1%	+32	15%
	MW	MH	SEN		CW		Marb	RE	Fat							
	33	85%	-2	95%	-5	25%	+33	90%	+1.20	10%	+77	35%	+0.13	50%		
% IMF Ratio	Coleman Charlo 0256 [AMF-CAF-XF]												SM			
	S A V Rainfall 6846 [AMF-CAF-XF]												+55			
	S A V Blackcap May 4136 [CAF]												75%			
Adj RE	Square B True North 8052 [AMF-CAF-XF]												SW			
	**19405246												+60			
	Elbanna of Conanga 1209												50%			
RE Ratio	Elbasta of Conanga 9703												SE			
													+77			
	Conneally Final Product [AMF-CAF-XF]												75%			
Adj Rib Fat	PAR Final Product 613 [DDF]												SE			
	PAR 2062 Primrose 0428 [DDC]												+83			
	RHCC 613 Zara 5978												100%			
Rib Fat Ratio	18536274												SE			
	RHCC Zara IF 9678 [DDF]												+160			
	RHCC Zara 6788												300%			
													SC			
													+763			
													40%			
Adj Rump Fat	BW	CE	BWR	ADJ WW	WWR	ADJ YW	YWR	Test ADG	GR							
	78	1	104	574	103	971	89									
	Dam's Production Record						Dam's Ultrasound Production Record									
Rump Fat Ratio	ACT BW	BWR	WWR	YWR	% IMF	RE	Fat	RU Fat								
	6-72	6-102	6-102	5-104												

As of 02/02/24



Though they've always been a part of the herd, four granddaughters made it official just in time for Christmas.



Friends and customers; I am writing this two days before Valentines Day. This will be the 44th Valentines Day that Carla and I have spent together and we will mark our 42 anniversary in May. We have seen significant changes in our lives over the years. Those early years were always a reason for a nice “date night” with a dinner and gifts and maybe a movie. Then came the kids with all the cookies and cards for their classmates. Then the empty nest years where a card and an occasional bunch of flowers. Now in our fading years, we both go to the dentist to get our annual checkup and teeth cleaning on Valentines Day. Pretty Romantic wouldn't you say? Nothing's to good for my girl!!!

As time marches on, there are milestones that we cross to mark the passage of the years. This year Carla's mother (Donna) passed away easter weekend. Both of us have now lost one parent. My college room mate retired and bought a lake house in South Carolina and is asking if I am ready to retire. I have two high school classmates that have officially retired. Cunningham tore the high school I attended down and replaced it. Last week Carla's best friend from high school had a stroke and seems to be recovering now. Each of these events has caused us to take pause and reflect how we want to spend our remaining years. There are times I think maybe we should slow down and enjoy what time we have left then most of the time. I come back to, I still get gratification and find contentment in what I am doing.

A couple of months ago I was asked to throw my hat in the ring for a director's position on the USPB board. I filled out the application form and went through the interview process. At the end of the day the nominating committee chose not to advance my name any further, which was okay. Somebody was probably looking out for me saying you are busy enough (it might have been Carla). I always find the process of filling out applications and doing interviews enlightening. I am forced to organize my thoughts and memorialize them on paper. The interviews almost always ask what you see as the biggest challenges coming up and something about the next generation.

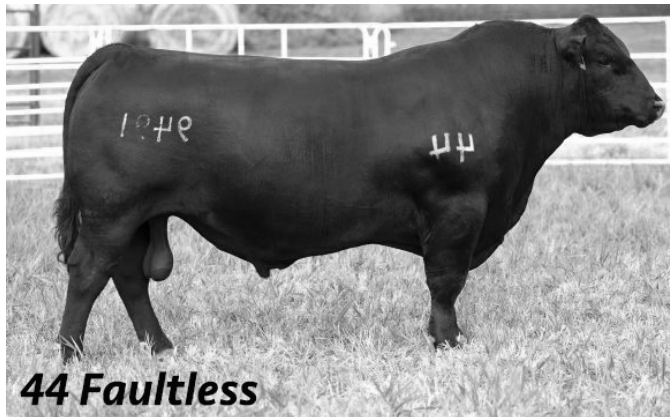
As we prepare for the bull sale, we already have next years bulls on the ground and are making bull selections to breed with, in another six weeks. If you haven't done so in a while, I would encourage you to take time to write down what direction you want to move your business in the next three-year horizon, then the next 3–6-year horizon, and then maybe look out 7-10 years. We have some unprecedented cattle prices right now, but remember there is no cure for high prices like high prices. Will you be prepared for the lean years when they return? We look forward to helping you reach your goals and appreciate your business.

Last year we mentioned we were expanding our feeding operation and we now have it fully operational. Over the course of the year, we were able to buy some of your calves either at the sale barn, video sale, or off the farm. We can't buy all your calves but if we know about them and are in the market, we will give your calves priority on our list. It also gives us a sense of pride when your calves are listed as sired by Bortz and Poland bulls.

Please call with any questions, 620-546-6077 - Berry 620-546-4199 - Brandon

CB Reference Sires

Registration Name	Tattoo Birth Date	Production										Maternal						Carcass						\$Values			
		CED Acc	BW Acc	WW Acc	YW Acc	RADG Acc	DMI Acc	YH Acc	SC Acc	Doc Acc	HP Acc	CEM Acc	Milk Acc	MkH Acc	MW Acc	MH Acc	SEN Acc	CW Acc	Marb Acc	RE Acc	Fat Acc	Carc Grp/Pg	Usnd Grp/Pg	SM SW	SF \$G	SB \$C	
18690054	672	+14	+0	+63	+118	+34	+94	+5	+1.36	+19	+9.3	+17	+25	154	+85	+4	-27	+64	+2.15	+1.17	+0.38	18	1020	+48	+121	+256	
GB Fireball 672	10/20/2016	.91	.97	.95	.93	.80	.80	.93	.92	.86	.69	.84	.79	615	.62	.57		.75	.73	.69	.73	66	2624	+60	+135	+380	
19568791	6939	+11	-8	+70	+132	+27	+2.19	+9	+76	+28	+15.2	+11	+31		+90	+9	-33	+58	+1.47	+94	+0.31	1		+61	+98	+196	
G A R Quantum 6939	08/27/2019	.40	.63	.55	.43	.36	.36	.54	.49	.46	.28	.33	.34		.41	.45		.46	.41	.40	.38	1		+69	+97	+315	
18141805	AB5	+18	-1.6	+60	+104	+18	+1.52	+7	+0.5	+19	+5.4	+17	+19	1	+37	+5	+1	+41	+1.46	+49	+0.32	4		+59	+82	+173	
G A R Prophet AB5	01/25/2015	.40	.69	.64	.51	.39	.39	.62	.58	.39	.29	.35	.42	11	.43	.45		.48	.43	.43	.42	16		+58	+91	+283	
19266718	7488	+16	-8	+58	+114	+29	+1.19	+2	+95	+23	+11.7	+13	+19	146	+60	+2	-11	+47	+1.63	+97	-0.17	20	1820	+57	+103	+212	
G A R Home Town	09/06/2018	.92	.97	.96	.94	.73	.73	.95	.95	.91	.73	.84	.71	364	.60	.62		.76	.73	.70	.74	62	5162	+54	+110	+332	
19531695	973	+14	+5	+80	+145	+35	+1.61	+9	+1.3	+13	+10.4	+17	+38		+108	+1.0	-46	+67	+90	+1.38	-0.15	2		+40	+112	+190	
CB 973 Velocity	01/14/2019	.32	.58	.51	.42	.30	.30	.52	.48	.29	.17	.25	.28		.34	.36		.40	.34	.35	.32	3		+80	+78	+286	
19513637	9491	+6	+1.1	+85	+166	+38	+2.22	+7	+1.88	+23	+12.5	+7	+29		+110	+9	-42	+78	+1.15	+1.02	-0.24	1	55	+62	+121	+208	
44 Faultless	09/05/2019	.54	.81	.76	.66	.41	.41	.77	.68	.43	.27	.34	.35		.44	.45		.53	.48	.48	.48	2	119	+73	+86	+332	
20139187	136	+2	+3.1	+70	+124	+26	+1.24	+8	+37	+19	+11.4	+6	+29		+65	+5	-19	+60	+89	+95	-0.11			+64	+107	+178	
CB 136 Legendary	02/12/2021	.36	.58	.51	.43	.35	.35	.52	.48	.36	.25	.31	.34		.39	.42		.43	.39	.39	.36			+64	+71	+295	



41	CB 338 Faultless															
Adj YrG Hip Ht	Birth Dt:	01/13/23	HD50K	Bull	*20780892					Tattoo:	338					
50	CED	BW	WW	YW	RADG	DMI	YH	SC								
Adj YrG Scr Clr	+7	45%	+1.7	65%	+84	10%	+149	5%	+32	10%	+1.74	90%	+7	30%	+17	90%
35.48	Doc	Claw	Angle	PAP	HS	HP	CEM	Milk								
3.32	+21	40%	+44	30%	+44	30%	+3.50	95%	+26	15%	+10.0	75%	+10	35%	+32	15%
% IMF	MW	MH	\$EN	CW	Marb	RE	Fat									
100	15%	+7	25%	-39	95%	+66	15%	+88	30%	+81	30%	-004	30%			
% IMF	SydGen Enhance [AMF-CAF-XF]															
Ratio	SydGen Exceed 3223 [AMF-CAF-XF]															
93	SydGen Rita 2618															
Adj RE	44 Faultless [AMF-CAF-XF]															
14.0	**19513637															
RE	44 Lucy 4775 [DDC-OSF]															
Ratio	V A R Discovery 2240 [AMF-CAF-XF]															
97	Da Es Ro Lucy 11209 [DDC]															
Adj	T C A Accruel 260 [AMF-CAF-XF]															
Rib Fat	FF Rito Relevant 8863 [AMF-CAF-XF]															
Ratio	FF Rita 6R22 of 3R30 Rampage [OSF]															
97	CB 107 Relevant															
*20141318	G A R 5050 New Design S39 [DDF]															
Rib Fat	CB 355 New Design S39 [DDF]															
Ratio	CB 134 Rito Revenue [DDF]															
105																
Adj	BW	CE	BWR	ADJ WW	WWR	ADJ YW	YWR	Test ADG	GR							
Rump Fat	79		105	669	103	1224	99									
0.31	Dam's Production Record															
Rump	Dam's Ultrasound Production Record															
Fat Ratio	ACT BW	BWR	WWR	YWR	% IMF	RE	Fat	RU Fat								
115	1-79	1-105	1-103	1-99	1-93	1-97	1-105	1-115								

42		CB 340 Faultless														
Adj YrG	Birth Dt:	01/10/23		HD50K		Bull		*20780889				Tattoo:		340		
Hip Ht	CED	BW	WW	YW	RADG	DMI	YH	SC								
50	+9	30%	+0	25%	+88	3%	+171	1%	+40	1%	+1.99	95%	+8	25%	+78	60%
Adj YrG	Doc	Claw	Angle	PAP	HS	HP	CEM	Milk								
Scr Clr	+25	20%	+39	15%	+44	30%	+4.20	95%	+57	60%	+6.4	95%	+8	55%	+28	40%
37.39	Adj	MW	MH	\$EN	CW	Marb	RE	Fat								
% IMF	97	20%	+7	25%	-35	90%	+76	5%	+1.13	15%	+99	10%	+002	35%		
4.50	SydGen Enhance [AMF-CAF-XF]															
% IMF	SydGen Exceed 3223 [AMF-CAF-XF]															
Ratio	SydGen Rita 2618															
126	44 Faultless [AMF-CAF-XF]															
Adj RE	**19513637															
14.2	44 Lucy 4775 [DDC-OSF]															
RE	V A R Discovery 2240 [AMF-CAF-XF]															
Ratio	Da Es Ro Lucy 11209 [DDC]															
98	Connealy Confidence Plus [AMF-CAF-XF]															
Adj	E&B Plus One [AMF-CAF-XF]															
Rib Fat	E&B Lady 1023 Precision 936 [NHF]															
0.25	CB 147 Plus One															
Rib Fat	*20141561															
Ratio	Thomas Edison 6764 [AMF-CAF-XF]															
114	CB 936 Edison [OHF]															
Adj	CB 624 Waylon [OHF-OSF]															
Rump Fat																
0.30																
Rump																
Fat Ratio																
111																

43	CB 341 Faultless															
Adj YrG Hip Ht	Birth Dt:	02/02/23	HD50K	Bull	*20780900					Tattoo:	341					
50	CED	BW	WW	YW	RADG	DMI	YH	SC								
Adj YrG Scr Clr	+11	15%	+8	40%	+72	25%	+135	15%	+28	35%	+1.79	90%	+7	30%	+83	55%
	Doc	Claw	Angle	PAP	HS	HP	CEM	Milk								
36.67	+31	4%	+31	2%	+47	45%	+74	40%	+00	1%	+14.2	30%	+14	10%	+35	10%
Adj	MW	MH	SEN		CW		Marb		RE		Fat					
% IMF	56	65%	+5	40%	-18	60%	+64	20%	+74	45%	+76	35%	-002	30%		
% IMF Ratio	SydGen Enhance [AMF-CAF-XF] SydGen Exceed 3223 [AMF-CAF-XF] SydGen Rita 2618															\$M
82	44 Faultless [AMF-CAF-XF]															+90
Adj RE	*19513637															3%
13.2	44 Lucy 4775 [DDC-OSF]															\$W
RE	V A R Discovery 2240 [AMF-CAF-XF]															+76
Ratio	Da Es Ro Lucy 11209 [DDC]															10%
96	Tehama Upward Y238 [DDF]															\$F
Adj	Tehama Tahoe B767 [AMF-CAF-XF]															+103
Rib Fat	Tehama Mary Blackbird Y684															20%
0.21	CB 004 Tahoe															\$G
*19882133	Werner War Party 2417 [AMF-CAF-XF]															+60
Rib Fat Ratio	CB 225 War Party [DDF]															35%
91	722 CB 4D7 [AMF-DDF-NHF]															\$B
Adj	BW	CE	BWR	ADJ WW	WWR	ADJ YW	YWR	Test ADG	GR							
Rump Fat	78		94	645	102	1183	104									
0.28	Dam's Production Record										Dam's Ultrasound Production Record					
Rump Fat Ratio	ACT BW	BWR	WWR	YWR	% IMF	RE	Fat	RU Fat								
97	2-74	2-100	2-99	1-104	1-82	1-96	1-91	1-97								

46		CB 327 Legendary 136									
Adj YrG Hip Ht	Birth Dt:	02/03/23	HD50K	Bull	20777631	Tattoo:	327				
52	CED	BW	WW	YW	RADG	DMI	YH	SC			
Adj YrG Scr Clr	+5	60%	+6	35%	+64	50%	+110	55%	+23	75%	
40.16	Doc	Claw	Angle	PAP	HS	HP	CEM	Milk			
Adj	+23	30%	+44	30%	+59	95%	-40	20%	+58	65%	
% IMF	MW	MH	\$EN	CW	Marb	RE	Fat				
2.48	57	65%	+6	30%	-17	55%	+58	30%	+70	50%	
% IMF Ratio	Quaker Hill Rampage 0A36 [AMF-CAF-XF]										
78	Connealy Legendary 644L [AMF-CAF-XF]										
Adj RE	Jazzed of Conanga 4660 [DDF-NHF]										
13.5	Dalebanks Consensus 3309										
RE	CB 678 DB Consensus										
Ratio	CB 400 Total Impact [DDF]										
99	Connealy Consensus 7229 [AMF-CAF-XF]										
Adj	Connealy Black Granite [AMF-CAF-XF]										
Rib Fat	Eura Elga of Conanga 9109										
0.27	Connealy Counselor [AMF-CAF-XF]										
Rib Fat Ratio	PAR B FP Primrose 3180 [DDF]										
117	Connealy Counselor [AMF-CAF-XF]										
Adj	Connealy Counselor [AMF-CAF-XF]										
Rump Fat	Connealy Counselor [AMF-CAF-XF]										
0.24	Connealy Counselor [AMF-CAF-XF]										
Rump Fat Ratio	Connealy Counselor [AMF-CAF-XF]										
83	Connealy Counselor [AMF-CAF-XF]										


50		CB 321 Velocity 973														
Adj Yrlg Hip Ht	Birth Dt:	02/03/23	HD50K	Bull	*20777593				Tattoo:	321						
50	CED	BW	WW	YW	RADG	DMI	YH	SC								
Adj Yrlg Scr Clr	+4	70%	+2.5	80%	+62	55%	+112	50%	+28	35%	+81	30%	+5	55%	+29	85%
36.63	Doc	Claw	Angle	PAP	HS	HP	CEM	Milk								
Adj	+18	55%	+72	95%	+51	65%	+1.50	60%	+44	40%	+9.9	80%	+9	45%	+29	30%
% IMF	MW	MH	SEN	CW	Marb	RE	Fat									
2.89	70	45%	+5	40%	-22	70%	+46	60%	+82	35%	+1.00	10%	-0.029	10%		
% IMF	G A R Momentum [CAF-D2F-XF]												\$M			
Ratio	Bridges Velocity [AMF-CAF-XF]												+44			
90	Bridges Daybreak 2100 [DDF]												\$W			
Adj RE	*19531695												+57			
13.7	Quaker Hill Rampage 0A36 [AMF-CAF-XF]												60%			
RE	CB 771 Rampage [OHF]												\$F			
Ratio	CB 574 Bogart Block Party [OHF-OSF]												+89			
100	GAR-EL4 Protege [AMF-CAF-XF]												50%			
Adj	Baldridge Waylon W34 [AMF-CAF-XF]												\$G			
Rib Fat	Baldridge Blackcap T163												+70			
0.25	CB 624 Waylon [OHF-OSF]												20%			
Rib Fat	#18674017												\$B			
Ratio	CB 150 Bextor 5828 [DDF]												+159			
109	CB 967 Mainline [AMF-DDF-NHF]												30%			
Adj	BW	CE	BWR	ADJ WW	WWR	ADJ YW	YWR	Test ADG	GR							
Rump Fat	94		109	607	96	1141	100									
0.24	Dam's Production Record												Dam's Ultrasound Production Record			
Rump	ACT BW	BWR	WWR	YWR	% IMF	RE	Fat	RU Fat								
Fat Ratio	6-85	6-108	6-103	2-108	2-120	2-96	2-105	2-98								
83																



Lot 50

51	CB 374 Magnificent															
Adj Yrlg Hip Ht	Birth Dt:	02/03/23	HD50K	Bull	*20780908					Tattoo:	374					
52	CED	BW	WW	YW	RADG	DMI	YH	SC								
Adj Yrlg Scr Clr	+8	35%	+1.2	50%	+59	65%	+112	50%	+27	40%	+1.14	50%	+1.1	5%	+92	50%
	Doc	Claw	Angle	PAP	HS	HP	CEM	Milk								
37.65	+20	45%	+47	40%	+49	55%	+2.82	85%	+74	85%	+7.8	95%	+14	10%	+28	40%
Adj % IMF	MW	MH	SEN		CW		Marb		RE		Fat					
2.64	53	70%	+4	50%	-13	45%	+46	60%	+89	30%	+86	25%	-0.004	30%		
% IMF Ratio	K C F Bennett Southside [AMF-CAF-XF]															
83	Mead Magnitude [AMF-CAF-XF]															
Adj RE	Mead Primrose N198															
13.9	AAR Ten X 7008 S A [AMF-CAF-XF]															
RE	FWY 7008 of T1088 3014 [DDF-NHF]															
Ratio	Riberbend Blackbird T1088 [DCC-NHC-AM]															
101	G A R Prophet AB5 [DDF-OSF]															
Adj Rib Fat	G A R Prophet [AMF-CAF-XF]															
0.24	Deer Valley Rita 0274 [DCC]															
Rib Fat Ratio	Woodhill Bogart X179-A94															
104	CB 052 Obj867 [AMF-DDF-NHF]															
Adj Rump Fat	CB 051 Bogart Block Party [OHF-OSF]															
0.35	Dam's Production Record															
Rump Fat Ratio	Dam's Ultrasound Production Record															
121	ACT BW	BWR	WWR	YWR	% IMF	RE	Fat	RU Fat								
	1-78	1-94	1-92	1-102	1-83	1-101	1-104	1-121								

53	CB 302 All In 5175															
Adj Yrlg Hip Ht	Birth Dt:	02/02/23	HD50K	Bull	*20777602					Tattoo:	302					
53	CED	BW	WW	YW	RADG	DMI	YH	SC								
Adj Yrlg Scr Clr	+5	60%	+2.2	75%	+82	10%	+142	10%	+29	25%	+1.82	95%	+1.4	1%	+1.39	20%
39.10	Doc	Claw	Angle	PAP	HS	HP	CEM	Milk								
Adj	+26	20%	+54	70%	+42	20%	+1.75	65%	+73	85%	+10.0	75%	+13	10%	+28	40%
% IMF	MW	MH	SEN	CW	Marb	RE	Fat									
2.75	77	40%	+1.2	3%	-25	75%	+73	10%	+65	55%	+57	65%	+0.055	95%		
% IMF											AAR Ten X 7008 S A [AMF-CAF-XF]					
Ratio											Deer Valley All In [AMF-CAF-XF]					
86											Deer Valley Rita 0274 [DDC]					
Adj RE											GAR Prophet [AMF-CAF-XF]					
13.7											Goode Prophet 2902					
RE											Goode 616 Rito 309 [AMF]					
Ratio											CB Block Party 156 [AMF-CAF-XF]					
100											Woodhill Bogart X179-A94					
Adj											Woodhill Evergreen T218-X179					
Rib Fat											Poss Total Impact 745 [AMF-CAF-XF]					
0.29											CB050 Retail Product [DDC-AMF-NHF]					
Rib Fat											+272					
Ratio											30%					
126																
Adj	BW	CE	BWR	ADJ WW	WWR	ADJ YW	YWR	Test ADG	GR							
Rump Fat	81		94	681	108	1316	115									
0.30	Dam's Production Record										Dam's Ultrasound Production Record					
Rump	ACT BW	BWR	WWR	YWR	% IMF	RE	Fat	RU Fat								
Fat Ratio	2-80	2-101	2-105	1-115	1-86	1-100	1-126	1-103								
103																

54	CB 303 All In 5175										
Adj YrG Hip Ht	Birth Dt:	02/07/23	HD50K	Bull	*20777614				Tattoo:	303	
51	CED	BW	WW	YW	RADG	DMI	YH	SC			
Adj YrG Scr Cir	+10	20%	-3	20%	+63	55%	+110	55%	+22	80%	+1.09
	Doc	Claw	Angle	PAP	HS	HP	CEM	Milk			
36.44	+16	65%	+51	55%	+38	10%	+2.60	80%	+93	95%	+7.2
Adj	MW	MH	\$EN	CW	Marb	RE	Fat				
% IMF	50	70%	+7	25%	-12	45%	+42	70%	+86	30%	+60
3.38								+0.14	55%		
% IMF Ratio	Deer Valley All In [AMF-CAF-XF]				A A R Ten X 7008 S A [AMF-CAF-XF]				\$M		
106	G A R All In 5175				Deer Valley Rita 0274 [DDC]				+60		
Adj RE	*+18369797				G A R Prophet [AMF-CAF-XF]				\$W		
14.1	Goode Prophet 2902				Goode 616 Rito 309 [AMF]				+6R		
RE									25%		
Ratio	Basin Payweight 1682 [AMF-CAF-XF]				Basin Payweight 006S [AMF-CAF-XF]				74		
103	CB 904 Payweight				21AR O Lass 7017				80%		
Adj	*19530675				Werner War Party 2417 [AMF-CAF-XF]				\$G		
Rib Fat	CB 225 War Party [DDF]				722 CB 4D7 [AMF-DDF-NHF]				+63		
0.27									30%		
Rib Fat Ratio									\$B		
117									+137		
Adj	BW	CE	BWR	ADJ WW	WWR	ADJ YW	YWR	Test ADG	GR		
Rump Fat	89		105	734	117	1129	99				
0.41	Dam's Production Record					Dam's Ultrasound Production Record					
Rump Fat Ratio	ACT BW	BWR	WWR	YWR	% IMF	RE	Fat	RU Fat			
141	2-79	2-101	2-108	1-99	1-106	1-103	1-117	1-141			

57		CB 345 Ashland 804M														
Adj YrG Hip Ht	Birth Dt:	02/18/23	HD50K	Bull	*20777590				Tattoo:	345						
51	CED	BW	WW	YW	RADG	DMI	YH	SC								
Adj YrG Scr Cir	+6	55%	+2.1	70%	+62	55%	+108	50%	+29	25%	+48	15%	+5	55%	-06	95%
37.61	Doc	Claw	Angle	PAP	HS	HP	CEM	Milk								
Adj	+24	25%	+56	75%	+44	30%	+1.83	65%	+47	45%	+9.4	80%	+7	65%	+25	60%
% IMF	2.69	MW	MH	\$EN	CW	Marb	RE	Fat								
Ratio	49	70%	+2	70%	-9	35%	+42	70%	+72	45%	+84	25%	-025	10%		\$M
84	G A R Ashland 804M										G A R Early Bird [DDF]		+62			
Adj RE	*19427709	Chair Rock Ambush 1018 [DDF-OSF]										55%	\$W			
14.1	Chair Rock Sure Fire 4113										G A R Sure Fire [AMF-CAF-XF]		+59			
RE	Chair Rock Predestined 9136 [DDF-NHF]										55%	\$F				
Ratio	Hoover Dam [AMF-CAF-XF]										40%	+92				
103	Baldrige Xplorer X233										55%	+62				
Adj	CB 532 Baldrige Xplorer [OSF]										30%	\$G				
Rib Fat	*18325049	CB 310 Big Eye 6998 [DDF]										155	\$B			
0.18	CB 687 Mid [AMF-DDF-NHF]										263	\$C				
Rib Fat											40%	+763				
Ratio											40%					
78	BW	CE	BWR	ADJ WW	WWR	ADJ YW	YWR	Test ADG	GR							
Adj	96		112	576	91	1118	98									
Rump Fat	Dam's Production Record					Dam's Ultrasound Production Record										
0.24	ACT BW	BWR	WWR	YWR	% IMF	RE	Fat	RU Fat								
Rump	3-84	3-104	3-98	2-98	2-83	2-98	2-95	2-99								
Fat Ratio																
83																

55	CB 301 Ashland 804M										
Adj YrG Hip Ht	Birth Dt:	02/17/23	HD50K	Bull	*20777586			Tattoo:	301		
51	CED	BW	WW	YW	RADG	DMI	YH	SC			
Adj YrG Scr Cir	+11	15%	-6 15%	+48 90%	+89 85%	+23 75%	+82 30%	+6 40%	+74 60%		
36.59	Doc	Claw	Angle	PAP	HS	HP	CEM	Milk			
Adj	+21	40%	+52 60%	+50 60%	+3.46 90%	+53 55%	+8.8 85%	+8 55%	+36 54%		
% IMF 2.86	MW	MH	\$EN	CW	Marb	RE	Fat				
	37	85%	+2 70%	-9 35%	+26 95%	+1.03 20%	+80 30%	-.051 2%			
% IMF Ratio	G A R Ashland [AMF-CAF-XF]							G A R Early Bird [DDF]	\$M		
89	Chair Rock Ambush 1018 [DDF-OSF]								+55 75%		
Adj RE	*19427709							G A R Sure Fire [AMF-CAF-XF]	\$W		
13.9	Chair Rock Sure Fire 4113								+58 55%		
RE	Chair Rock Predestined 9136 [DDF-NHF]								\$F		
Ratio	Connealy Onward [AMF-CAF-XF]								+62 95%		
101	Werner War Party 2417 [AMF-CAF-XF]							BAAR USA Lady Jaye 489 [AMF]	\$G		
Adj	CB 414 War Party [DDF-OHF]							G A R Bextor 5828 [AMF-NHF]	+R0 10%		
Rib Fat	17922733							CB 138 Bextor 5828 [DDC-AMF-NHF]	+142 55%		
0.24	CB 959 Rito Rito								\$C		
Rib Fat									+73R 65%		
Ratio											
104	BW	CE	BWR	ADJ WW	WWR	ADJ YW	YWR	Test ADG	GR		
Adj	84		98	673	107	1164	102				
Rump Fat	Dam's Production Record					Dam's Ultrasound Production Record					
0.26	ACT BW	BWR	WWR	YWR	% IMF	RE	Fat	RU Fat			
Rump Fat Ratio	7-82	7-100	7-100	5-103	4-88	4-105	4-116	4-109			
90											

58		CB 360 Hometown														
Adj YrG Hip Ht	Birth Dt:	01/12/23	HD50K	Bull	*20777572			Tattoo:	360							
49	CED	BW	WW	YW	RADG	DMI	YH	SC								
Adj YrG Scr Cir	+8	35%	+2.2	75%	+63	55%	+116	45%	+27	40%	+1.05	45%	+5	55%	+1.24	30%
38.45	Doc	Claw	Angle	PAP	HS	HP	CEM	Milk								
Adj	+20	45%	+60	90%	+46	40%	-43	20%	+52	55%	+10.4	75%	+12	20%	+23	75%
% IMF	MW	MH	\$EN	CW	Marb	RE	Fat									
3.80	69	50%	+6	30%	-18	60%	+57	35%	+1.38	5%	+93	15%	-0.51	2%		
% IMF	G A R Early Bird [DDF]															\$M
Ratio	G A R Ashland [AMF-CAF-XF]															+54
107	Chair Rock Ambush 1018 [DDF-OSF]															80%
Adj RE	G A R Home Town [AMF-CAF-XF]															+54
14.4	*19266718															70%
RE	Chair Rock Sure Fire 6095 [DDF]															\$F
Ratio	Chair Rock Progress 3005 [DDC]															+107
99	A A R Ten X 7008 S A [AMF-CAF-XF]															\$G
Adj Rib Fat	EXAR Resistol 3710B [AMF-CAF-XF]															+99
0.19	Sitz Henrietta Pride 643T															33%
Rib Fat	CB 113 Resistol															\$B
Ratio	*20139196															+206
86	CB 422 Total Impact [AMF-NHF]															43%
	CB406FD [DDF]															\$C
																+121
																5%
Adj	BW	CE	BWR	ADJ WW	WWR	ADJ YW	YWR	Test ADG	GR							
Rump Fat	77		102	551	85	1151	93									
0.21	Dam's Production Record					Dam's Ultrasound Production Record										
Rump	ACT BW	BWR	WWR	YWR	% IMF	RE	Fat	RU Fat								
Fat Ratio	1-77	1-102	1-85	1-93	1-107	1-99	1-86	1-78								
78																

As of 02/08/24

56		CB 329 Ashland 804M									
Adj YrG	Birth Dt:	01/15/23	HD50K	Bull	*20777582	Tattoo:	329				
Hip Ht	50	CED	BW	WW	YW	RADG	DMI	YH	SC		
Adj YrG	13	10%	-1.6	10%	+61	60%	+115	45%	+25	60%	+1.51
Scr Cir	37.55	Doc	Claw	Angle	PAP	HS	HP	CEM	Milk		
Adj	17	60%	+58	85%	+59	95%	+13	30%	+50	50%	+7.

60 CB 362 Hometown													
Adj Yrkg	Birth Dt:	01/29/23	HD50K	Bull	*20777597	Tattoo:	362						
Hip Ht													
49													
Adj Yrkg													
Scr Clr													
35.97													
Adj													
% IMF													
Ratio													
102													
Adj RE													
13.7													
RE													
Ratio													
100													
Adj													
Rib Fat													
0.20													
Rib Fat													
Ratio													
87													
Adj													
Rump Fat													
0.26													
Rump													
Fat Ratio													
90													

63 CB 307 AB5													
Adj Yrkg	Birth Dt:	01/26/23	HD50K	Bull	*20777594	Tattoo:	307						
Hip Ht													
52													
Adj Yrkg													
Scr Clr													
36.87													
Adj													
% IMF													
Ratio													
87													
Adj RE													
14.2													
RE													
Ratio													
104													
Adj													
Rib Fat													
0.20													
Rib Fat													
Ratio													
87													
Adj													
Rump Fat													
0.22													
Rump													
Fat Ratio													
76													

61 CB 363 Hometown													
Adj Yrkg	Birth Dt:	01/30/23	HD50K	Bull	*20777613	Tattoo:	363						
Hip Ht													
49													
Adj Yrkg													
Scr Clr													
35.03													
Adj													
% IMF													
Ratio													
106													
Adj RE													
14.3													
RE													
Ratio													
104													
Adj													
Rib Fat													
0.23													
Rib Fat													
Ratio													
100													
Adj													
Rump Fat													
0.20													
Rump													
Fat Ratio													
69													



62 CB 364 Hometown													
Adj Yrkg	Birth Dt:	01/31/23	HD50K	Bull	*20777624	Tattoo:	364						
Hip Ht													
50													
Adj Yrkg													
Scr Clr													
36.56													
Adj													
% IMF													
Ratio													
92													
Adj RE													
13.6													
RE													
Ratio													
99													
Adj													
Rib Fat													
0.25													
Rib Fat													
Ratio													
109													
Adj													
Rump Fat													
0.18													
Rump													
Fat Ratio													
62													

64 CB 308 AB5													
Adj Yrkg	Birth Dt:	01/25/23	HD50K	Bull	*20777600	Tattoo:	308						
Hip Ht													
50													
Adj Yrkg													
Scr Clr													
35.84													
Adj													
% IMF													
Ratio													
176													
Adj RE													
13.6													
RE													
Ratio													
99													
Adj													
Rib Fat													
0.22													
Rib Fat													
Ratio													
96													
Adj													
Rump Fat													
0.29													
Rump													
Fat Ratio													
100													

71		CB 357 Fireball															
Adj Yrig Hip Ht	Birth Dt:	01/26/23		HD50K		Bull		*20777633				Tattoo:		357			
50	CED	BW		WW		YW		RADG		DMI		YH		SC			
Adj Yrig Scr Cir	+15	3%	-1.4	10%	+71	30%	+123	35%	+30	20%	+87	30%	+8	25%	+59	70%	
	Doc	Claw		Angle		PAP		HS		HP		CEM		Milk			
	+21	40%	+58	85%	+41	20%	+03	25%	+15	4%	+8.3	90%	+17	1%	+26	55%	
Adj	MW	MH		SEN		CW		Marb		RE		Fat					
% IMF	76	40%	+7	25%	-23	70%	+57	35%	+1.38	5%	+82	25%	-010	25%			
Ratio																\$M	
98																+57	
Adj RE																70%	
14.3																\$W	
Ratio																+71	
104																20%	
Adj																\$F	
Rib Fat																+105	
0.18																20%	
Ratio																\$G	
78																+94	
Adj																4%	
Rib Fat																\$B	
0.18																+200	
Ratio																5%	
78																\$C	
Adj																+316	
Rump Fat																10%	
0.36	BW	CE	BWR	ADJ WW	WWR	ADJ YW	YWR	Test ADG	GR								
Ratio	59		72	570	90	1136	99										
124	Dam's Production Record															Dam's Ultrasound Production Record	
	ACT BW	BWR	WWR	YWR	% IMF	RE	Fat	RU Fat									
	2-65	2-89	2-94	1-99	1-98	1-104	1-78	1-124									

74		CB 335 Enhance														
Adj Yrig Hip Ht	Birth Dt:	01/27/23	HD50K	Bull	*20777627				Tattoo:	335						
51	CED	BW	WW	YW	RADG	DMI	YH	SC								
Adj Yrig Scr Cir	+12	10%	-1	25%	+55	75%	+113	50%	+30	20%	+1.02	40%	+6	40%	+1.92	4%
38.90	Doc	Claw	Angle	PAP	HS	HP	CEM	Milk								
Adj	+24	25%	+43	25%	+70	95%	+4.87	95%	+34	20%	+13.6	35%	+12	20%	+24	70%
% IMF	Adj	MW	MH	\$EN	CW	Marb	RE	Fat								
2.69	61	60%	+4	50%	-14	50%	+39	75%	+79	40%	+52	70%	-003	30%		
% IMF Ratio															\$M	
84															+58	
Adj RE															70%	
13.6															\$W	
Ratio															+50	
99															80%	
Adj															\$F	
Rib Fat															+97	
0.27															100%	
Ratio															\$G	
117															+60	
Adj															35%	
Rump Fat															\$B	
0.26															+151	
Ratio															5%	
90															\$C	
															+254	
															45%	
	BW	CE	BWR	ADJ WW	WWR	ADJ YW	YWR	Test ADG	GR							
Adj Rump Fat	88		102		572		91		1118		98					
0.26	Dam's Production Record														Dam's Ultrasound Production Record	
Rump Fat Ratio	ACT BW	BWR	WWR	YWR	% IMF	RE	Fat	RU Fat								
90	4-71	4-94	4-94	2-95	1-84	1-99	1-117	1-90								

72	CB 378 Niagara															
Adj Yrig Hip Ht	Birth Dt:	01/10/23	HD50K	Bull	*20777580					Tattoo:	378					
50	CED	BW	WW	YW	RADG	DMI	YH	SC								
Adj Yrig Scr Cir	+9	30%	+3	30%	+79	15%	+150	5%	+33	10%	+1.88	95%	+8	25%	+1.00	45%
37.39	Doc	Claw	Angle	PAP	HS	HP	CEM	Milk								
Adj	+25	20%	+58	85%	+59	95%	+2.22	75%	+01	1%	+15.5	20%	+13	10%	+36	5%
% IMF	MW	MH	\$EN	CW	Marb	RE	Fat									
Ratio	97	20%	+6	30%	-39	95%	+69	15%	+94	25%	+96	15%	+049	90%	\$M	
70	SydGen C C & 7 [AMF-CAF-XF]															
Adj RE	Hoover Dam [AMF-CAF-XF]															
14.3	Erica of Ellston C124															
RE	S S Niagara Z29 [AMF-CAF-XF]															
Ratio	#17287387															
99	B/R New Day 454 [DDC-AMF-XF]															
Adj	Jet S S X144 [DDF]															
Rib Fat	JET S S T151 [DDF]															
0.21	G A R Sure Fire 6404 [OSF]															
Ratio	GB Fireball 672 [AMF-CAF-XF]															
95	GB Anticipation 432 [DDF]															
Adj	SandPoint Butkus X797 [AMF-CAF-XF]															
Rump Fat	PAR SPB Lady 6284															
0.29	PAR GD Lady 2684 [DDF]															
Fat Ratio																
107																
107																

American Angus Association Selection Tools

Expected Progeny Difference (EPD), is the prediction of how future progeny of each animal are expected to perform relative to the progeny of other animals listed in the database. EPDs are expressed in units of measure for the trait, plus or minus. Interim EPDs may appear on young animals when their performance has yet to be incorporated into the American Angus Association National Cattle Evaluation (NCE) procedures. This EPD will be preceded by an "I", and may or may not include the animal's own performance record for a particular trait, depending on its availability, appropriate contemporary grouping, or data edits needed for NCE.

Accuracy (ACC), is the reliability that can be placed on the EPD. An accuracy of close to 1.0 indicates higher reliability. Accuracy is impacted by the number of progeny and ancestral records included in the analysis.

Calving Ease Direct (CED), is expressed as a difference in percentage of unassisted births, with a higher value indicating greater calving ease in first-calf heifers. It predicts the average difference in ease with which a sire's calves will be born when he is bred to first-calf heifers.

Birth Weight (BW), expressed in pounds, is a predictor of a sire's ability to transmit birth weight to his progeny compared to that of other sires.

Weaning Weight (WW), expressed in pounds, is a predictor of a sire's ability to transmit weaning growth to his progeny compared to that of other sires.

Residual Average Daily Gain (RADG), feed efficiency expressed in pounds per day, is a predictor of a sire's genetic ability for postweaning gain in future progeny compared to that of other sires, given a constant amount of feed consumed.

Yearling Weight (YW), expressed in pounds, is a predictor of a sire's ability to transmit yearling growth to his progeny compared to that of other sires.

Yearling Height (YH), is a predictor of a sire's ability to transmit yearling height, expressed in inches, compared to the that of other sires.

Scrotal Circumference (SC), expressed in centimeters, is a predictor of the difference in transmitting ability for scrotal size compared to that of other sires.

Docility (DOC), is expressed as a difference in yearling cattle temperament, with a higher value indicating more favorable docility in a sire's offspring compared to another sire.

MATERNAL

Heifer Pregnancy (HP), is a selection tool to increase the probability or chance of a sire's daughters becoming pregnant as first-calf heifers during a normal breeding season. A higher EPD is the more favorable direction, and the EPD is reported in percentage units.

Calving Ease Maternal (CEM), is expressed as a difference in percentage of unassisted births, with a higher value indicating greater calving ease in first-calf daughters. It predicts the average ease with which a sire's daughters will calve as first-calf heifers when compared to daughters of other sires.

Maternal Milk (Milk), is a predictor of a sire's genetic merit for milk and mothering ability in his daughters compared to daughters of other sires. In other words, it is that part of a calf's weaning weight attributed to milk and mothering ability.

Mature Weight (MW), expressed in pounds, is a predictor of the difference in mature weight of daughters of a sire compared to the daughters of other sires.

Mature Height (MH), expressed in inches, is a predictor of the difference in mature height of a sire's daughters compared to daughters of other sires.

FOOT SCORE

Claw Set (Claw), is expressed in units of claw-set score. A lower EPD is more favorable, indicating a sire will produce progeny with more ideal claw set, which is toes that are symmetrical, even and appropriately spaced.

Foot Angle (Angle), is expressed in units of foot-angle score. A lower EPD is more favorable, indicating a sire will produce progeny with more ideal foot angle, which is a 45-degree angle at the pastern joint with appropriate toe length and heel depth.

CARCASS

The genetic evaluation produces a single set of EPDs for carcass traits where the units of measure are in trait format and analyzed on an age-constant basis.

Carcass Weight (CW), expressed in pounds, is a predictor of the differences in hot carcass weight of a sire's progeny compared to progeny of other sires.

Marbling (Marb), is expressed as a fraction of the difference in USDA marbling score of a sire's progeny compared to progeny of other sires.

Ribeye Area (RE), expressed in square inches, is a predictor of the difference in ribeye area of a sire's progeny compared to progeny of other sires.

Fat Thickness (Fat), expressed in inches, is a predictor of the differences in external fat thickness at the 12th rib (as measured between the 12th and 13th ribs) of a sire's progeny compared to progeny of other sires.

\$VALUE INDEXES

\$Value Indexes, reported in dollars per head, are multi-trait selection indexes where a higher value suggests more profit. The \$Value is an estimate of how future progeny of each sire are expected to perform, on average, compared to progeny of other sires if sires were randomly mated to cows and if calves were exposed to the same environment.

Maternal Weaned Calf Value (\$M), expressed in dollars per head, predicts profitability differences in progeny due to genetics from conception to weaning. Increased selection pressure on \$M aims to decrease overall mature cow size and improve foot structure and fertility while maintaining weaning weights consistent with today's production.

Weaned Calf Value (\$W), expressed in dollars per head, provides the expected difference in future progeny preweaning performance from birth to weaning. Increased selection pressure on \$W increases weaning and maternal milk traits while increasing mature cow size.

Cow Energy Value (\$EN), expressed in dollars savings per cow per year, assesses differences in cow energy requirements as an expected dollar savings difference in daughters of sires. A larger value is more favorable when comparing two animals. Components for computing \$EN savings difference include lactation energy requirements and energy costs associated with differences in mature cow size.

Feedlot Value (\$F), expressed in dollars per head, is the expected average difference in future progeny performance for postweaning merit compared to progeny of other sires. The underlying objective assumes commercial producers will retain ownership of cattle through the feedlot phase and sell fed cattle on a carcass weight basis with no considerations of premiums or discounts for quality and yield grade.

Grid Value (\$G), expressed in dollars per carcass, is the expected average difference in future progeny performance for carcass grid merit, including quality and yield grade attributes, compared to progeny of other sires.

Beef Value (\$B), expressed in dollars per carcass, represents the expected average differences in the progeny postweaning performance and carcass value compared to progeny of other sires. This index assumes commercial producers wean all male and female progeny, retain ownership of these animals through the feedlot phase, and market these animals on a quality-based carcass grid.

Carcass Plus Bull Sale

March 6, 2024

Poland Angus Ranch

11230 NE Harvest Rd.

Isabel, KS 67065

620.739.4587

polandangus@havalandtelco.com

cbfarmsfp@gmail.com

Event Schedule

Bulls Available for Viewing 8:00 AM

Lunch 11:30 AM

Opening Remarks 12:45 PM

Video Auction Begins 1:00 PM



DVAuction
Broadcasting Real-Time Auctions

